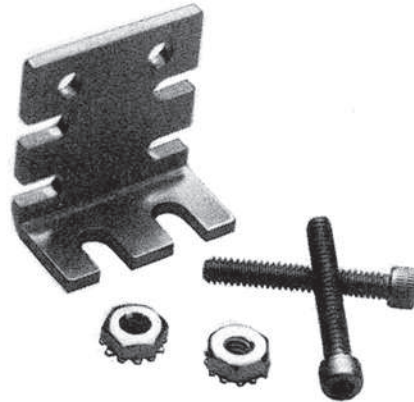


310 SOLENOID VALVES



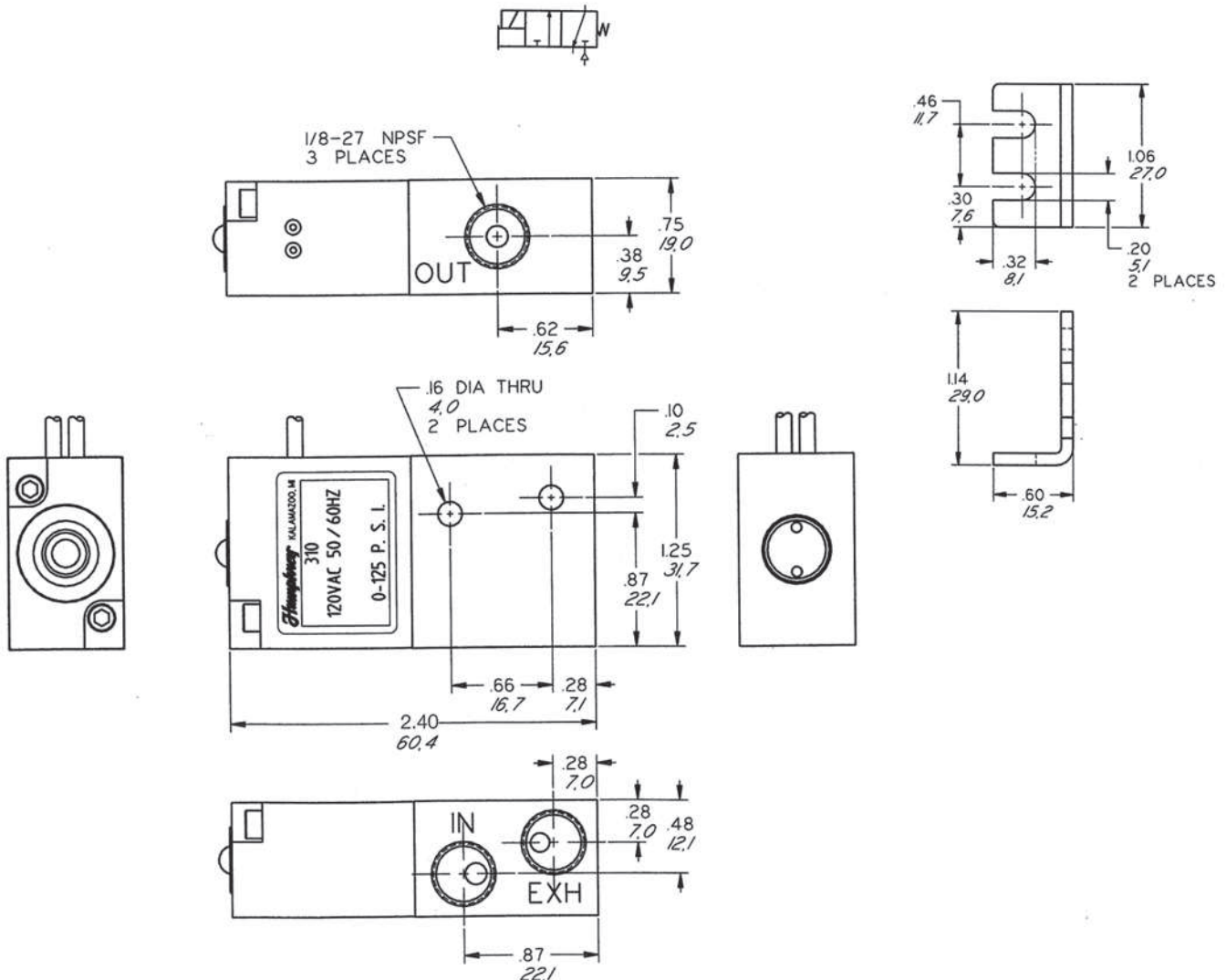
310

- 3-way
- 2-position, spring return
- Direct acting, single solenoid
- Continuous duty coil
- Three 1/8-27 NPSF ports (IN, OUT, EXH)
- Non-locking manual override
- 24-inch lead wires
- Specify model V310 for vacuum from 0" to 28" Hg.

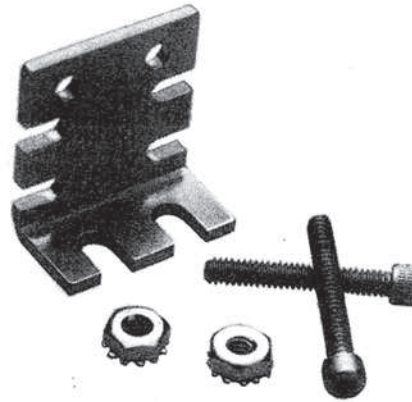


8-288A MOUNTING BRACKET

A convenient, optional plated steel mounting bracket kit is designed for use with both 3-way and 4-way valves. This kit consists of a bracket, two #6-32 screws, and two captive lockwasher nuts. Screws are plated steel, 1-inch (25.4mm) long.



410 SOLENOID VALVES

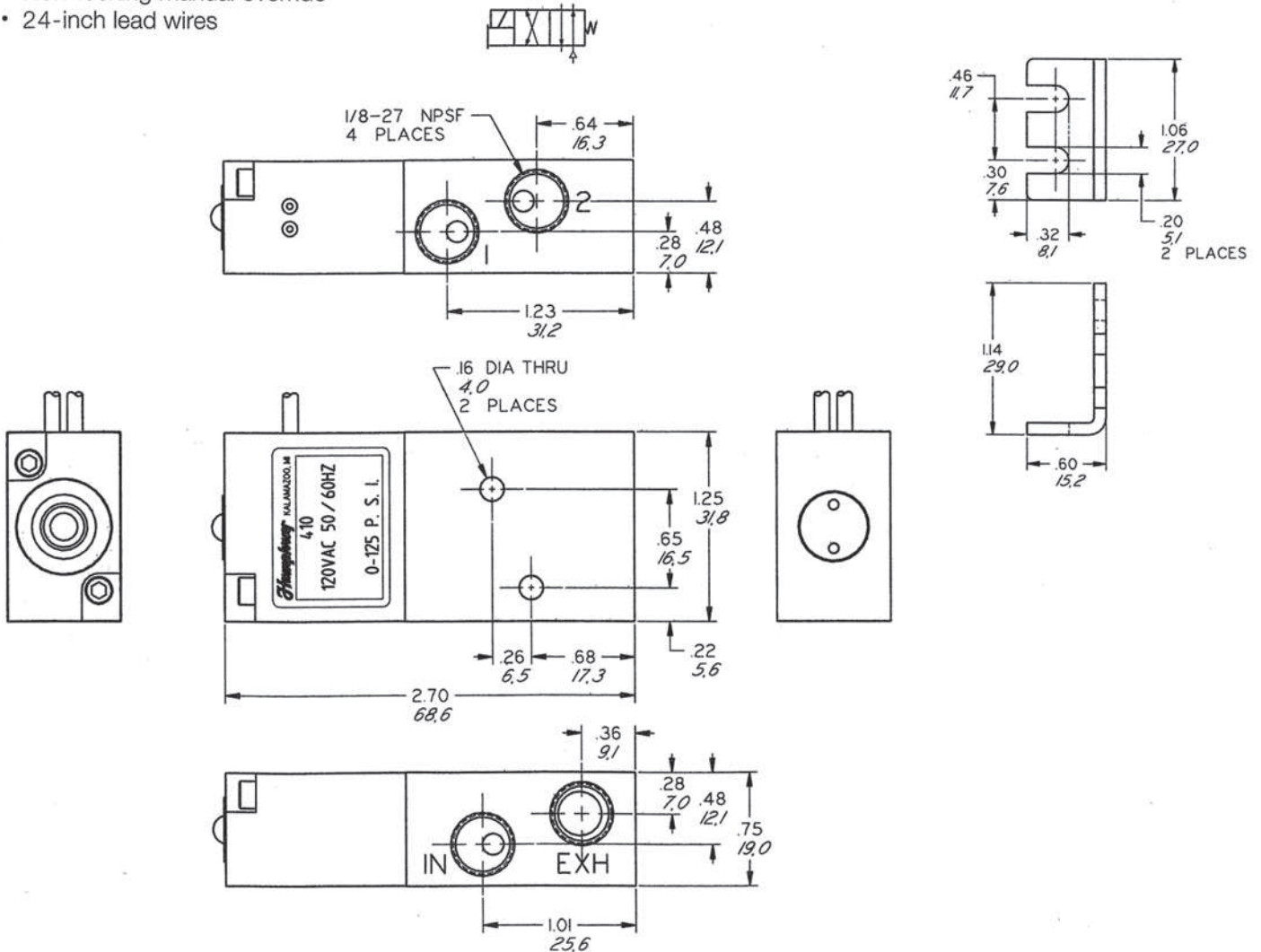


410

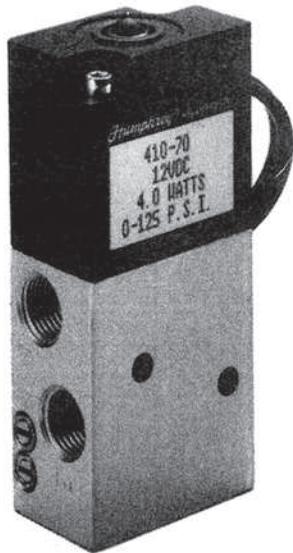
- 4-way, Normally Open/Normally Closed
- 2-position, spring return
- Direct acting, single solenoid
- Continuous duty coil
- Four 1/8-27 NPSF ports: IN, Delivery ports 1 & 2, and single exhaust port (EXH)
- Non-locking manual override
- 24-inch lead wires

8-288A MOUNTING BRACKET

A convenient, optional plated steel mounting bracket kit is designed for use with both 3-way and 4-way valves. This kit consists of a bracket, two #8-32 screws, and two captive lockwasher nuts. Screws are plated steel, 1.25 inch (31.8mm) long.

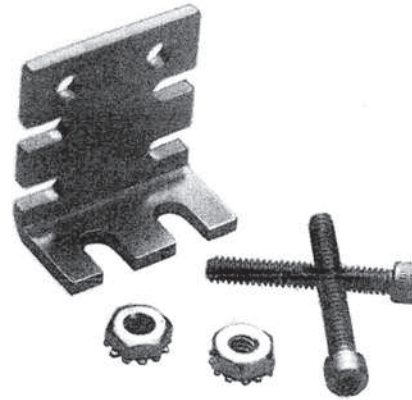


410-70 SOLENOID VALVES



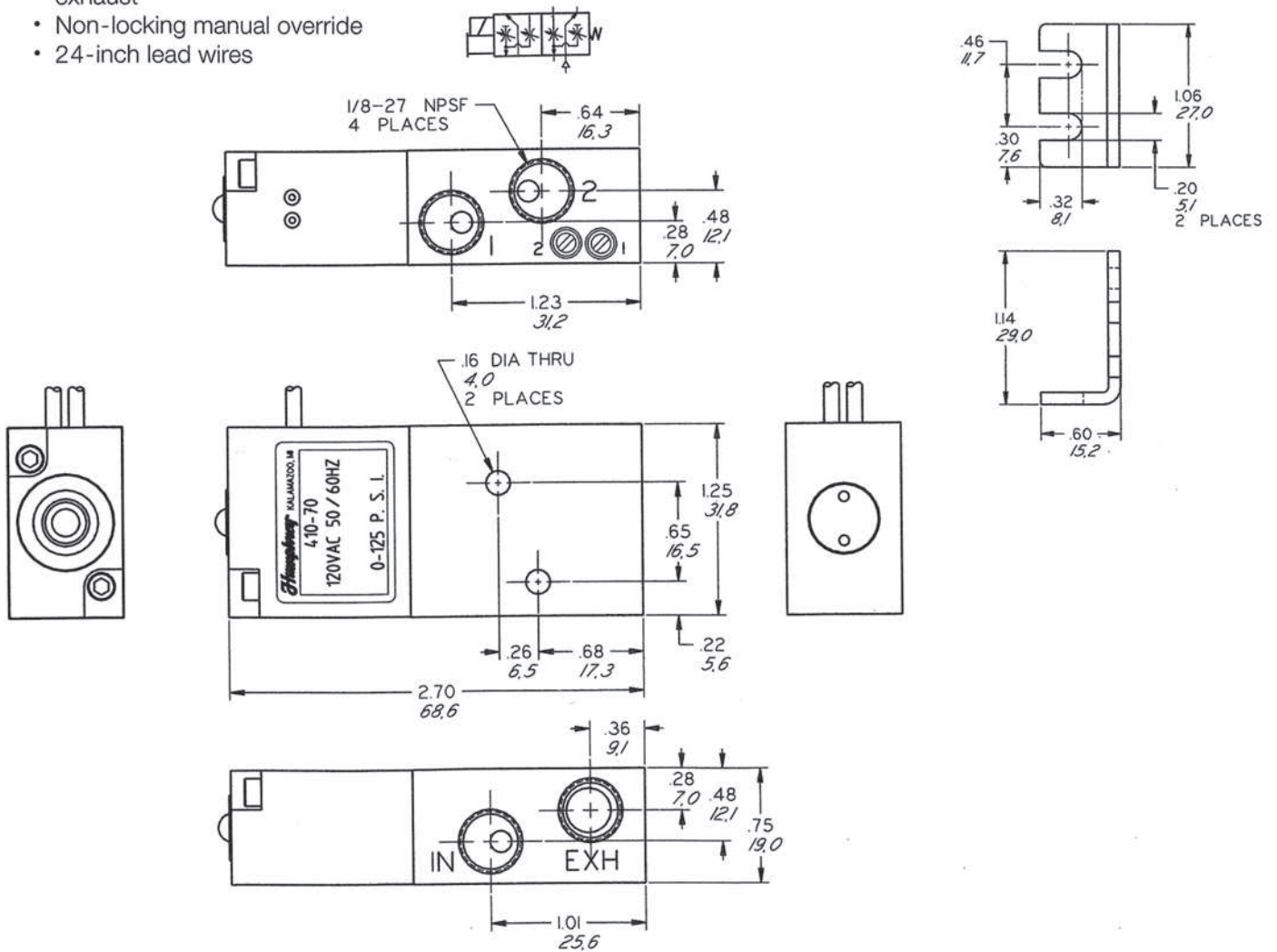
410-70

- 4-way, Normally Open/Normally Closed
- 2-position, spring return
- Direct acting, single solenoid
- Continuous duty coil
- Four 1/8-27 NPSF ports: IN, Delivery ports 1 & 2, and single exhaust port (EXH)
- Individual flow controls for each Delivery port exhaust
- Non-locking manual override
- 24-inch lead wires



8-288A MOUNTING BRACKET

A convenient, optional plated steel mounting bracket kit is designed for use with both 3-way and 4-way valves. This kit consists of a bracket, two #8-32 screws, and two captive lockwasher nuts. Screws are plated steel, 1.25 inch (31.8mm) long.



ORDER INFORMATION

310/410 Series In-line Body Ported Valves
 1/8-inch ports, 2-way, 3-way, 4-way

VALVES

Model ^{NOTE 2}	Option description												Voltage
	Two-way ^{NOTE 1}	With mounting bracket ^{NOTE 1}	Conduit connector (24" ends)	DIN-type connector	DC surge suppression	Flow controls	Locking manual override	Thumbscrew Locking override	No manual override	72" lead wires	Metal oxide varistor	Rotated coil (180°)	
Option code	2	21	36	39	50	70	81	83	87	LL	MOV	RC	
310 3-way, in-line	SP					NA							12 VDC, 24 VDC 24 VAC 50/60 100 VAC 50/60 120 VAC 50/60 200 VAC 50/60 240 VAC 50/60
V310 vacuum 3-way, in-line		SP	SP	SP	SP		SP	SP	SP	SP	SP	SP	
410 4-way, in-line	NA					SP							

NOTE: Standard valves are furnished with 24" flying lead wires and a non-locking manual override.

NOTE 1: 1/8" plug for 2-way and code 21 mounting bracket are furnished unattached to the valve.

NOTE 2: To specify metric ports, add an "E" prefix (i.e., E310 or EV310).

ACCESSORIES

Model	Description
8-288A	Universal mounting bracket
130-31	1/8-inch pipe plug
HS-2	DIN receptacle for use with code 39 connector
HS-2L	Lighted DIN receptacle for use with code 39 connector. Specify voltage. DC only.
HS2-LED	LED DIN receptacle for use with code 39 connector.

HOW TO ORDER

Starting with Model Number specify options in order from left to right.

Example: To order Model 310-2-21-LL 12VDC
 2-Way Operation (310-2)
 Mounting Bracket (310-2-21)
 72" Flying Leads (310-2-21-LL)
 Voltage 12VDC (310-2-21-LL 12VDC)

To order Model 410-21-70-87 120VAC 50/60
 Mounting Bracket (410-21)
 Flow Controls (410-21-70)
 No Manual Override (410-21-70-87)
 Voltage 120VAC 50/60 (410-21-70-87 120VAC 50/60)

Remember: Option Codes marked STD and NA are not used as part of the Model Number when ordering. N/C indicates no charge but Option Code must be included in the Model Number. SP indicates that Option must be specified when ordering. Specified Options become part of the Model Number.

N/C = No charge
 NA = Not available
 STD = Standard
 SP = Specify; Additional charge for this option