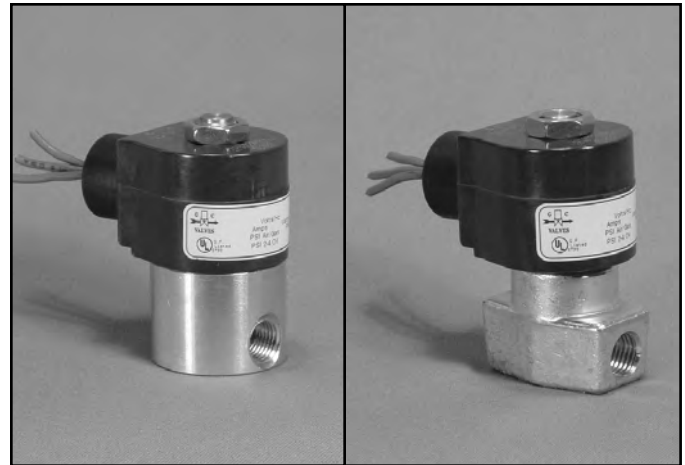


1/4" NPT Brass Body 2-Way Direct Acting Normally Closed



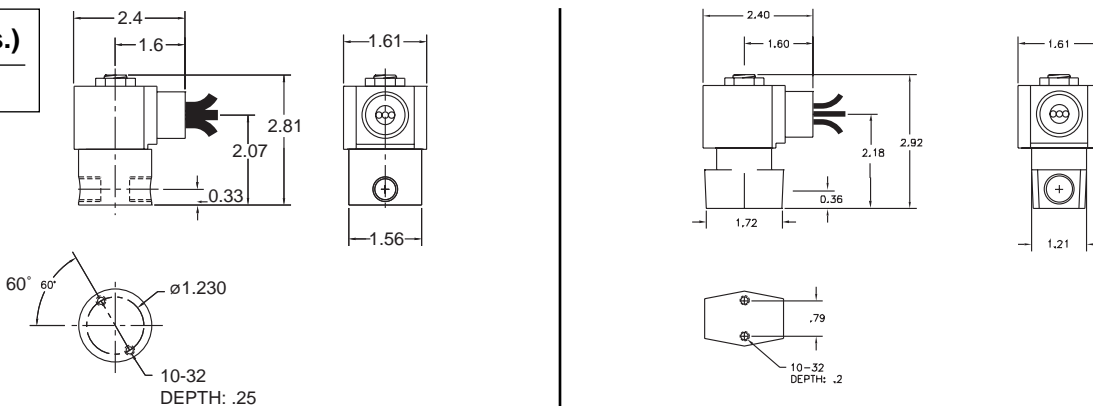
Materials	Seals:	Nitrile, Viton®, Ethylene Propylene, Teflon®, Rulon
	Orifice:	Stainless Steel
Electrical	Standard Housing:	Encapsulated Waterproof Conduit (NEMA 4/4X)
	Optional Housings:	Metallic Conduit, Explosion-proof (NEMA 7), Grommet, Open Frame, Junction Box (single or dual knockouts), DIN; Contact GC Valves Customer Service for others.
	Standard Voltages:	24, 120, 240 AC 60 Hz; 50 Hz available 6, 12, 24 DC; Contact GC Valves Customer Service for Additional Voltages.
	Voltage Tolerance:	±10% of applicable voltage
	Coil Classes:	F, H, N
	Standard Lead Length:	24 inch
Operating Temperature	Amaient (Nominal):	32°F to 125°F
Mounting	Position:	Any
Approvals*	Agency:	UL Safety Shutoff, UL Listed, UL Recognized, CSA Approved, FM Certified

* Not available for all variations

© Registered Trademark of DuPont Co.

Dimensions/Weight

Weight (lbs.)
1.1



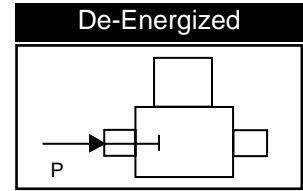
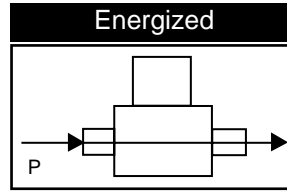
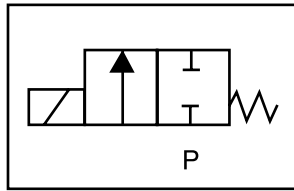
GC Valves Customer Service: 800-828-0484 (7:30am to 4pm ET) or 800-582-4232 (7:30am to 4pm PT)



S311 – 1/4" NPT, Brass Body, Normally Closed

Valve Selection List

Normally Closed



Pipe Size NPT	Orifice Size in.	C _v	Minimum	Operating Pressure Differential (psi)								Max Fluid Temp. °F	Seal Material	Power Consumption (Watts)		Model Code (120V/60HZ — 110V/50HZ) Shown
				Maximum										AC	DC	
				Air/Gas		Water		Light Oil		Steam*						
				AC	DC	AC	DC	AC	DC	AC	DC			AC	DC	Brass Body
1/4	1/32	.03	0	2000	2000	2000	2000	—	—	150*	150*	295	EPR	8	9	S311GF02C8AC1
	3/64	.05	0	770	420	770	420	—	—	150*	150*	295	EPR	8	9	S311GF02C8BC3
	1/16	.10	0	560	185	560	185	—	—	150*	150*	295	EPR	8	9	S311GF02C8BC5
	5/64	.15	0	400	150	400	150	—	—	150*	150*	295	EPR	8	9	S311GF02C8BC7
	3/32	.21	0	300	130	300	130	—	—	150*	130*	295	EPR	8	9	S311GF02C8BC9
	7/64	.29	0	210	90	210	90	—	—	150*	90*	295	EPR	8	9	S311GF02C8BD3
	1/8	.32	0	155	60	155	60	—	—	150*	60*	295	EPR	8	9	S311GF02C8BD5
	5/32	.43	0	105	35	105	35	—	—	105*	35*	295	EPR	8	9	S311GF02C8BD7
	3/16	.49	0	75	20	75	20	—	—	75*	20*	295	EPR	8	9	S311GF02C8BE1
	1/4	.85	0	35	15	35	15	—	—	35*	15*	295	EPR	8	9	S311GF02C9BE7
	9/32	1.0	0	20	10	20	10	—	—	20*	10*	295	EPR	8	9	S311GF02C9BF1
	3/8	1.1	0	15	5	15	5	—	—	15*	5*	295	EPR	8	9	S311GF02C9BF5
1/4	1/32	.03	0	2000	2000	2000	2000	2000	2000	—	—	180	Nitrile	8	9	S311GF02N8AC1
	3/64	.05	0	770	420	770	420	770	420	—	—	180	Nitrile	8	9	S311GF02N8BC3
	1/16	.10	0	560	185	560	185	560	185	—	—	180	Nitrile	8	9	S311GF02N8BC5
	5/64	.15	0	400	150	400	150	400	150	—	—	180	Nitrile	8	9	S311GF02N8BC7
	3/32	.21	0	300	130	300	130	300	130	—	—	180	Nitrile	8	9	S311GF02N8BC9
	7/64	.29	0	210	90	210	90	210	90	—	—	180	Nitrile	8	9	S311GF02N8BD3
	1/8	.32	0	155	60	155	60	155	60	—	—	180	Nitrile	8	9	S311GF02N8BD5
	5/32	.43	0	105	35	105	35	105	35	—	—	180	Nitrile	8	9	S311GF02N8BD7
	3/16	.49	0	75	20	75	20	75	20	—	—	180	Nitrile	8	9	S311GF02N8BE1
	1/4	.85	0	35	15	35	15	35	15	—	—	180	Nitrile	8	9	S311GF02N9BE7
	9/32	1.0	0	20	10	20	10	20	10	—	—	180	Nitrile	8	9	S311GF02N9BF1
	3/8	1.1	0	15	5	15	5	15	5	—	—	180	Nitrile	8	9	S311GF02N9BF5
1/4	1/32	.03	0	2000	2000	2000	2000	2000	2000	—	—	230	Viton	8	9	S311GF02V8AC1
	3/64	.05	0	770	420	770	420	770	420	—	—	230	Viton	8	9	S311GF02V8BC3
	1/16	.10	0	560	185	560	185	560	185	—	—	230	Viton	8	9	S311GF02V8BC5
	5/64	.15	0	400	150	400	150	400	150	—	—	230	Viton	8	9	S311GF02V8BC7
	3/32	.21	0	300	130	300	130	300	130	—	—	230	Viton	8	9	S311GF02V8BC9
	7/64	.29	0	210	90	210	90	210	150	—	—	230	Viton	8	9	S311GF02V8BD3
	1/8	.32	0	155	60	155	60	155	60	—	—	230	Viton	8	9	S311GF02V8BD5
	5/32	.43	0	105	35	105	35	105	35	—	—	230	Viton	8	9	S311GF02V8BD7
	3/16	.49	0	75	20	75	20	75	20	—	—	230	Viton	8	9	S311GF02V8BE1
	1/4	.85	0	35	15	35	15	35	15	—	—	230	Viton	8	9	S311GF02V9BE7
	9/32	1.0	0	20	10	20	10	20	10	—	—	230	Viton	8	9	S311GF02V9BF1
	3/8	1.1	0	15	5	15	5	15	5	—	—	230	Viton	8	9	S311GF02V9BF5

* Class H Coil Recommended for Steam and Other High Temperature Applications

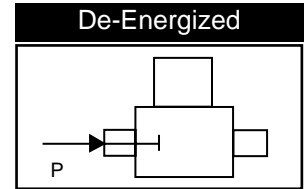
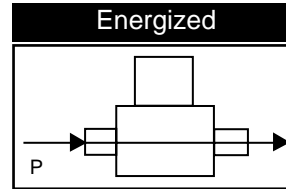
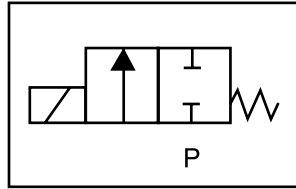
GC Valves Customer Service: 800-828-0484 (7:30am to 4pm ET) or 800-582-4232 (7:30am to 4pm PT)

S311 – 1/4" NPT, Brass Body, Normally Closed



Valve Selection List

Normally Closed



Pipe Size NPT	Orifice Size in.	C _v	Minimum	Operating Pressure Differential (psi)								Max Fluid Temp. °F	Seal Material	Power Consumption (Watts)		Model Code (120V/60HZ — 110V/50HZ Shown)
				Maximum										AC	DC	
				Air/Gas		Water		Light Oil		Steam*						
				AC	DC	AC	DC	AC	DC	AC	DC			AC	DC	Brass Body
1/4	1/32	.03	0	2000	2000	2000	2000	2000	2000	150*	150*	366	Rulon	8	9	S311GF02R8AC1
	3/64	.05	0	770	420	770	420	770	420	150*	150*	366	Rulon	8	9	S311GF02R8BC3
	1/16	.10	0	560	185	560	185	560	185	150*	150*	366	Rulon	8	9	S311GF02R8BC5
	5/64	.15	0	400	150	400	150	400	150	150*	150*	366	Rulon	8	9	S311GF02R8BC7
	3/32	.21	0	300	130	300	130	300	130	150*	130*	366	Rulon	8	9	S311GF02R8BC9
	7/64	.29	0	210	90	210	90	210	90	150*	90*	366	Rulon	8	9	S311GF02R8BD3
	1/8	.32	0	155	60	155	60	155	60	150*	60*	366	Rulon	8	9	S311GF02R8BD5
	5/32	.43	0	105	35	105	35	105	35	105*	35*	366	Rulon	8	9	S311GF02R8BD7
	3/16	.49	0	75	20	75	20	75	20	75*	20*	366	Rulon	8	9	S311GF02R8BE1
	1/4	.85	0	35	15	35	15	35	15	35*	15*	366	Rulon	8	9	S311GF02R9BE7
	9/32	1.0	0	20	10	20	10	20	10	20*	10*	366	Rulon	8	9	S311GF02R9BF1
3/8	1.1	0	15	5	15	5	15	5	15*	5*	366	Rulon	8	9	S311GF02R9BF5	
1/4	1/32	.03	0	2000	2000	2000	2000	2000	2000	150*	150*	366	Teflon	8	9	S311GF02T8AC1
	3/64	.05	0	770	420	770	420	770	420	150*	150*	366	Teflon	8	9	S311GF02T8BC3
	1/16	.10	0	560	185	560	185	560	185	150*	150*	366	Teflon	8	9	S311GF02T8BC5
	5/64	.15	0	400	150	400	150	400	150	150*	150*	366	Teflon	8	9	S311GF02T8BC7
	3/32	.21	0	300	130	300	130	300	130	150*	130*	366	Teflon	8	9	S311GF02T8BC9
	7/64	.29	0	210	90	210	90	210	90	150*	90*	366	Teflon	8	9	S311GF02T8BD3
	1/8	.32	0	155	60	155	60	155	60	150*	60*	366	Teflon	8	9	S311GF02T8BD5
	5/32	.43	0	105	35	105	35	105	35	105*	35*	366	Teflon	8	9	S311GF02T8BD7
	3/16	.49	0	75	20	75	20	75	20	75*	20*	366	Teflon	8	9	S311GF02T8BE1
	1/4	.85	0	35	15	35	15	35	15	35*	15*	366	Teflon	8	9	S311GF02T9BE7
	9/32	1.0	0	20	10	20	10	20	10	20*	10*	366	Teflon	8	9	S311GF02T9BF1
3/8	1.1	0	15	5	15	5	15	5	15*	5*	366	Teflon	8	9	S311GF02T9BF5	

* Class H Coil Recommended for Steam and Other High Temperature Applications



S311 – 1/4" NPT, Brass Body, Normally Closed

Part Numbering

1	2	3	4	5	6	7	8	9	10	11	12	13
S	3	1	1	G	F	0	2	C	8	B	C	1
Series			Operating Mode	Housing*	Coil Class*	Voltage*		Seal Material	Body Material	Pipe Connection	Orifice Size	
S31			1: Normally Closed	G: Conduit	F: Class F H: Class H	02: 120/60 110/50		C: EPR N: Nitrile V: Viton R: Rulon T: Teflon	8: Brass 9: Forged Brass	B: 1/4" NPT	C1: 1/32" C3: 3/64" C5: 1/16" C7: 5/64" C9: 3/32" D3: 7/64" D5: 1/8" D7: 5/32" E1: 3/16" E7: 1/4" F1: 9/32" F5: 3/8" [®]	

* See the "Engineering Guide" for additional voltages, variations and options.

[®]Brass

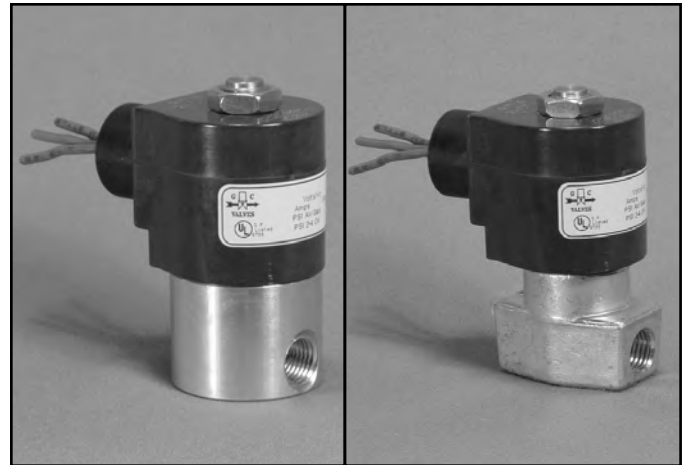
Coil Data

Coil Family	
Type	Size
All	S3

Frequency (Hz)	60	50
Nominal Power (VA)	Inrush	36
	Holding	13

GC Valves Customer Service: 800-828-0484 (7:30am to 4pm ET) or 800-582-4232 (7:30am to 4pm PT)

1/4" NPT Brass Body 2-Way Direct Acting Normally Closed



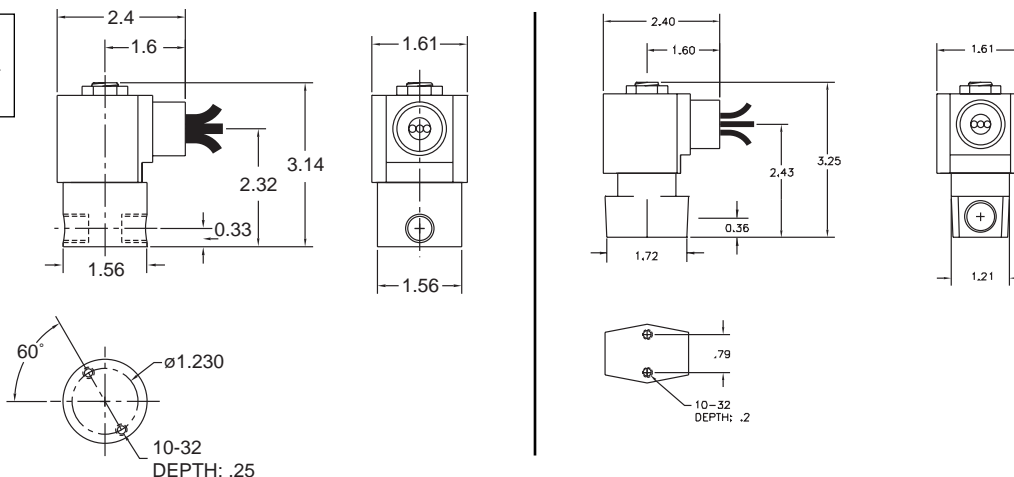
Materials	Seals:	Nitrile, Viton®, Ethylene Propylene, Teflon®, Rulon
	Orifice:	Stainless Steel
Electrical	Standard Housing:	Encapsulated Waterproof Conduit (NEMA 4/4X)
	Optional Housings:	Metallic Conduit, Explosion-proof (NEMA 7), Grommet, Open Frame, Junction Box (single or dual knockouts), DIN; Contact GC Valves Customer Service for others.
	Standard Voltages:	24, 120, 240 AC 60 Hz; 50 Hz available 6, 12, 24 DC; Contact GC Valves Customer Service for Additional Voltages.
	Voltage Tolerance:	±10% of applicable voltage
	Coil Classes:	F, H, N
	Standard Lead Length:	24 inch
Operating Temperature	Ambient (Nominal):	32°F to 125°F
Mounting	Position:	Any
Approvals*	Agency:	UL Safety Shut-off, UL Listed, UL Recognized, CSA Approved, FM Certified

* Not available for all variations

© Registered Trademark of DuPont Co.

Dimensions/Weight

Weight (lbs.)
1.1



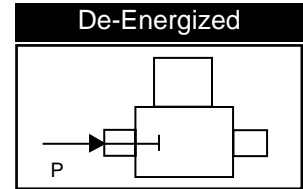
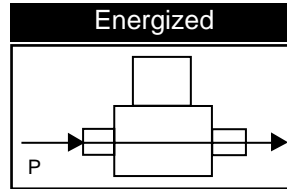
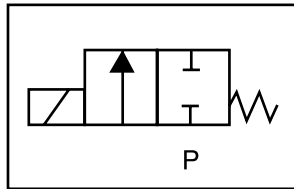
GC Valves Customer Service: 800-828-0484 (7:30am to 4pm ET) or 800-582-4232 (7:30am to 4pm PT)



S301 – 1/4" NPT, Brass Body, Normally Closed

Valve Selection List

Normally Closed



Pipe Size NPT	Orifice Size in.	C _v	Minimum	Operating Pressure Differential (psi)								Max Fluid Temp. °F	Seal Material	Power Consumption (Watts)		Model Code (120V/60HZ — 110V/50HZ Shown)
				Maximum										AC	DC	
				Air/Gas		Water		Light Oil		Steam*						
				AC	DC	AC	DC	AC	DC	AC	DC					
1/4	1/32	.03	0	2400	2400	2400	2400	—	—	150*	150*	295	EPR	10	10	S301GF02C8BC1
	3/64	.05	0	1050	1000	1050	1000	—	—	150*	150*	295	EPR	10	10	S301GF02C8BC3
	1/16	.10	0	700	300	700	300	—	—	150*	150*	295	EPR	10	10	S301GF02C8BC5
	5/64	.15	0	500	240	500	240	—	—	150*	150*	295	EPR	10	10	S301GF02C8BC7
	3/32	.21	0	400	200	400	200	—	—	150*	150*	295	EPR	10	10	S301GF02C8BC9
	7/64	.29	0	350	170	350	170	—	—	150*	150*	295	EPR	10	10	S301GF02C8BD3
	1/8	.36	0	200	140	200	140	—	—	150*	140*	295	EPR	10	10	S301GF02C8BD5
	5/32	.44	0	150	100	150	100	—	—	150*	100*	295	EPR	10	10	S301GF02C8BD7
	3/16	.65	0	100	70	100	70	—	—	100*	70*	295	EPR	10	10	S301GF02C8BE1
	1/4	.85	0	50	20	50	20	—	—	50*	20*	295	EPR	10	10	S301GF02C9BE7
	9/32	1.0	0	35	15	34	15	—	—	35*	15*	295	EPR	10	10	S301GF02C9BF1
	3/8	1.1	0	20	5	20	5	—	—	20*	5*	295	EPR	10	10	S301GF02C9BF5
1/4	1/32	.03	0	2400	2400	2400	2400	2400	—	—	180	Nitrile	10	10	S301GF02N8BC1	
	3/64	.05	0	1050	1000	1050	1000	1050	1000	—	—	180	Nitrile	10	10	S301GF02N8BC3
	1/16	.10	0	700	300	700	300	700	300	—	—	180	Nitrile	10	10	S301GF02N8BC5
	5/64	.15	0	500	240	500	240	500	240	—	—	180	Nitrile	10	10	S301GF02N8BC7
	3/32	.21	0	400	200	400	200	400	200	—	—	180	Nitrile	10	10	S301GF02N8BC9
	7/64	.29	0	350	170	350	170	350	170	—	—	180	Nitrile	10	10	S301GF02N8BD3
	1/8	.36	0	200	140	200	140	200	140	—	—	180	Nitrile	10	10	S301GF02N8BD5
	5/32	.44	0	150	100	150	100	150	100	—	—	180	Nitrile	10	10	S301GF02N8BD7
	3/16	.65	0	100	70	100	70	100	70	—	—	180	Nitrile	10	10	S301GF02N8BE1
	1/4	.85	0	50	20	50	20	50	20	—	—	180	Nitrile	10	10	S301GF02N9BE7
	9/32	1.0	0	35	15	35	15	35	15	—	—	180	Nitrile	10	10	S301GF02N9BF1
	3/8	1.1	0	20	5	20	5	20	5	—	—	180	Nitrile	10	10	S301GF02N9BF5
1/4	1/32	.03	0	2400	2400	2400	2400	2400	—	—	230	Viton	10	10	S301GF02V8BC1	
	3/64	.05	0	1050	1000	1050	1000	1050	1000	—	—	230	Viton	10	10	S301GF02V8BC3
	1/16	.10	0	700	300	700	300	700	300	—	—	230	Viton	10	10	S301GF02V8BC5
	5/64	.15	0	500	240	500	240	500	240	—	—	230	Viton	10	10	S301GF02V8BC7
	3/32	.21	0	400	200	400	200	400	200	—	—	230	Viton	10	10	S301GF02V8BC9
	7/64	.29	0	350	170	350	170	350	170	—	—	230	Viton	10	10	S301GF02V8BD3
	1/8	.36	0	200	140	200	140	200	140	—	—	230	Viton	10	10	S301GF02V8BD5
	5/32	.44	0	150	100	150	100	150	100	—	—	230	Viton	10	10	S301GF02V8BD7
	3/16	.65	0	100	70	100	70	100	70	—	—	230	Viton	10	10	S301GF02V8BE1
	1/4	.85	0	50	20	50	20	50	20	—	—	230	Viton	10	10	S301GF02V9BE7
	9/32	1.0	0	35	15	35	15	35	15	—	—	230	Viton	10	10	S301GF02V9BF1
	3/8	1.1	0	20	0	20	5	20	5	—	—	230	Viton	10	10	S301GF02V9BF5

* Class H Coil Recommended for Steam and Other High Temperature Applications

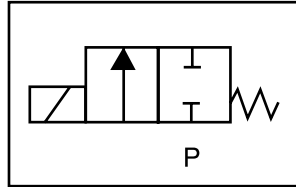
GC Valves Customer Service: 800-828-0484 (7:30am to 4pm ET) or 800-582-4232 (7:30am to 4pm PT)

S301 – 1/4" NPT, Brass Body, Normally Closed

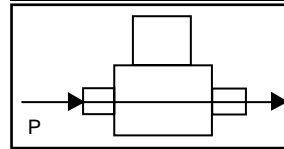


Valve Selection List

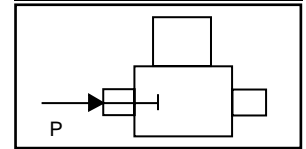
Normally Closed



Energized



De-Energized



Pipe Size NPT	Orifice Size in.	C _v	Minimum	Operating Pressure Differential (psi)								Max Fluid Temp. °F	Seal Material	Power Consumption (Watts)		Model Code (120V/60HZ — 110V/50HZ) Shown
				Maximum										AC	DC	
				Air/Gas		Water		Light Oil		Steam*						
				AC	DC	AC	DC	AC	DC	AC	DC			AC	DC	Brass Body
1/4	1/32	.03	0	2400	2400	2400	2400	2400	2400	150*	150*	366	Rulon	10	10	S301GF02R8BC1
	3/64	.05	0	1050	1000	1050	1000	1050	1000	150*	150*	366	Rulon	10	10	S301GF02R8BC3
	1/16	.10	0	700	300	700	300	700	300	150*	150*	366	Rulon	10	10	S301GF02R8BC5
	5/64	.15	0	500	240	500	240	500	240	150*	150*	366	Rulon	10	10	S301GF02R8BC7
	3/32	.21	0	400	200	400	200	400	200	150*	150*	366	Rulon	10	10	S301GF02R8BC9
	7/64	.29	0	350	170	350	170	350	170	150	150	366	Rulon	10	10	S301GF02R8BD3
	1/8	.36	0	200	140	200	140	200	140	150*	140*	366	Rulon	10	10	S301GF02R8BD5
	5/32	.44	0	150	100	150	100	150	100	150*	100*	366	Rulon	10	10	S301GF02R8BD7
	3/16	.65	0	100	70	100	70	100	70	100*	70*	366	Rulon	10	10	S301GF02R8BE1
	1/4	.85	0	50	20	50	20	50	20	50*	20*	366	Rulon	10	10	S301GF02R9BE7
	9/32	1.0	0	35	15	35	15	35	15	35*	15*	366	Rulon	10	10	S301GF02R9BF1
3/8	1.1	0	20	5	20	5	20	5	20*	5*	366	Rulon	10	10	S301GF02R9BF5	
1/4	1/32	.03	0	2400	2400	2400	2400	2400	2400	150*	150*	366	Teflon	10	10	S301GF02T8BC1
	3/64	.05	0	1050	1000	1050	1000	1050	1000	150*	150*	366	Teflon	10	10	S301GF02T8BC3
	1/16	.10	0	700	300	700	300	700	300	150*	150*	366	Teflon	10	10	S301GF02T8BC5
	5/64	.15	0	500	240	500	240	500	240	150*	150*	366	Teflon	10	10	S301GF02T8BC7
	3/32	.21	0	400	200	400	200	400	200	150*	150*	366	Teflon	10	10	S301GF02T8BC9
	7/64	.29	0	350	170	350	170	350	170	150	150	366	Teflon	10	10	S301GF02T8BD3
	1/8	.36	0	200	140	200	140	200	140	150*	140*	366	Teflon	10	10	S301GF02T8BD5
	5/32	.44	0	150	100	150	100	150	100	150*	100*	366	Teflon	10	10	S301GF02T8BD7
	3/16	.65	0	100	70	100	70	100	70	100*	70*	366	Teflon	10	10	S301GF02T8BE1
	1/4	.85	0	50	20	50	20	50	20	50*	20*	366	Teflon	10	10	S301GF02T9BE7
	9/32	1.0	0	35	15	35	15	35	15	35*	15*	366	Teflon	10	10	S301GF02T9BF1
3/8	1.1	0	20	5	20	5	20	5	20*	5*	366	Teflon	10	10	S301GF02T9BF5	

* Class H Coil Recommended for Steam and Other High Temperature Applications



S301 – 1/4" NPT, Brass Body, Normally Closed

Part Numbering

1	2	3	4	5	6	7	8	9	10	11	12	13
S	3	0	1	G	F	0	2	N	8	B	C	1
Series			Operating Mode	Housing*	Coil Class*	Voltage*		Seal Material	Body Material	Pipe Connection	Orifice Size	
S30			1: Normally Closed	G: Conduit	F: Class F H: Class H	02: 120/60 110/50		C: EPR N: Nitrile V: Viton R: Rulon T: Teflon	8: Brass 9: Forged Brass	B: 1/4" NPT	C1: 1/32" C3: 3/64" C5: 1/16" C7: 5/64" C9: 3/32" D5: 1/8" D7: 5/32" E1: 3/16" E7: 1/4" F1: 9/32" F5: 3/8"	

* See the "Engineering Guide" for additional voltages, variations and options.

®Brass

Coil Data

Coil Family	
Type	Size
All	S4

Frequency (Hz)		60	50
Nominal Power (VA)	Inrush	46	46
	Holding	18	19

GC Valves Customer Service: 800-828-0484 (7:30am to 4pm ET) or 800-582-4232 (7:30am to 4pm PT)

- 1/4" NPT
- Brass Body
- 2-Way Piloted Piston
- Normally Closed



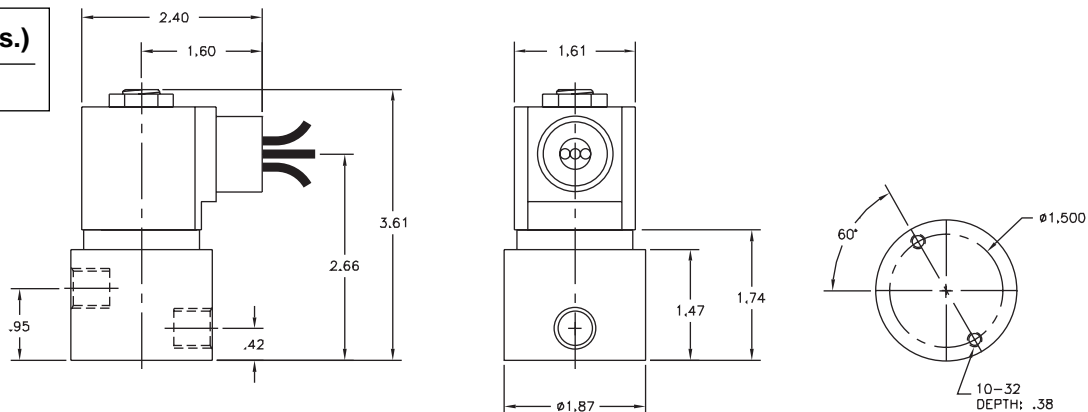
Materials	Seals:	Nitrile, Viton®, Teflon®, Ethylene Propylene
	Orifice: Pilot Main	Stainless Steel Stainless Steel Ø 3/8"
Electrical	Standard Housing:	Encapsulated Waterproof Conduit (NEMA 4/4X)
	Optional Housings:	Metallic Conduit, Explosion-proof (NEMA 7), Grommet, Open Frame, Junction Box (single or dual knockouts), DIN; Contact GC Valves Customer Service for others.
	Standard Voltages:	24, 120, 240 AC 60 Hz; 50 Hz available 6, 12, 24 DC; Contact GC Valves Customer Service for Additional Voltages.
	Voltage Tolerance:	±10% of applicable voltage
	Coil Classes:	F, H, N
	Standard Lead Length:	24 inch
Operating Temperature	Ambient (Nominal):	32°F to 125°F
Mounting	Position:	Any
Approvals*	Agency:	UL Safety Shutoff, UL Listed, UL Recognized, CSA Approved, FM Certified

* Not available for all variations

© Registered Trademark of DuPont Co.

Dimensions/Weight

Weight (lbs.)
1.8



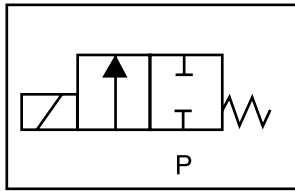
GC Valves Customer Service: 800-828-0484 (7:30am to 4pm ET) or 800-582-4232 (7:30am to 4pm PT)



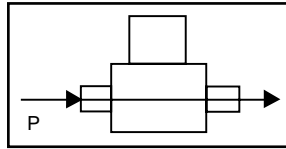
S401 – 1/4" NPT, Brass Body, Normally Closed

Valve Selection List

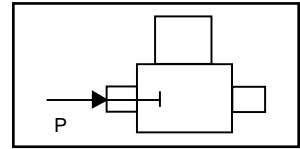
Normally Closed



Energized



De-Energized



Pipe Size NPT	Orifice Size IN	C _v	Operating Pressure Differential (psi)												Max Fluid Temp. °F	Seal Material	Power Consumption (Watts)		Model Code (120V/60HZ — 110V/50HZ) Shown
			Maximum														AC	DC	
			Air/Gas		Water		Light Oil		#5 and #6 Heated Fuel Oil		Steam*		AC	DC					
1/4	3/8	1.1	0	300	150	300	150	—	—	—	—	—			—	295	EPR	10	10
	3/8	1.1	0	300	150	300	150	300	150	300	150	—	—	180	Nitrile	10	10	S401GF02N9BF5	
	3/8	1.1	0	300	150	300	150	300	150	300	150	—	—	230	Viton	10	10	S401GF02V9BF5	
	3/8	1.1	0	300	150	300	150	300	150	300	150	—	—	366	Teflon	10	10	S401GF02T9BF5	
	3/8	1.1	0	—	—	—	—	—	—	—	—	—	50*	50*	295	EPR**	10	10	S401GH02E9BF5
	3/8	1.1	0	—	—	—	—	—	—	—	—	—	150*	150*	366	Teflon**	10	9	S401GH02S9BF5

* Class H Coil Recommended for Steam and Other High Temperature Applications

Part Numbering

1	2	3	4	5	6	7	8	9	10	11	12	13
S	4	0	1	G	F	0	2	C	9	B	F	5
Series			Operating Mode	Housing*	Coil Class*	Voltage*		Seal Material	Body Material	Pipe Connection	Orifice Size	
S40			1: Normally Closed	G: Conduit	F: Class F H: Class H	02: 120/60 110/50		C: EPR N: Nitrile V: Viton T: Teflon E: EPR** S: Teflon**	9: Brass	B: 1/4" NPT	F5: 3/8"	

* See the "Engineering Guide" for additional voltages, variations and options.

**For Steam Service

Coil Data

Coil Family	
Type	Size
All	S4

Frequency (Hz)	60	50
Nominal Power (VA)	Inrush	46
	Holding	21

GC Valves Customer Service: 800-828-0484 (7:30am to 4pm ET) or 800-582-4232 (7:30am to 4pm PT)

1/4" NPT Stainless Steel Body 2-Way Direct Acting Normally Closed



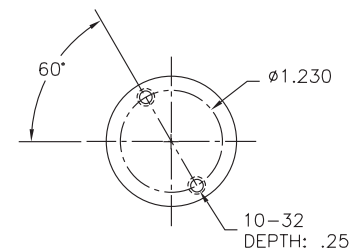
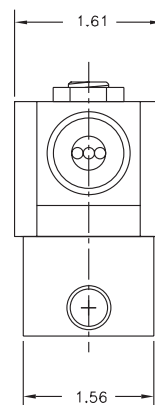
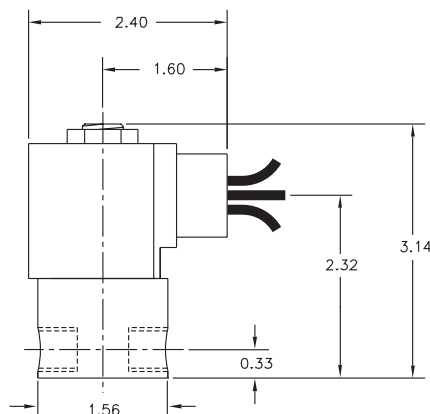
Materials	Seals:	Nitrile, Viton®, Ethylene Propylene, Teflon®, Rulon
	Orifice:	Stainless Steel
Electrical	Standard Housing:	Encapsulated Waterproof Conduit (NEMA 4/4X)
	Optional Housings:	Metallic Conduit, Explosion-proof (NEMA 7), Grommet, Open Frame, Junction Box (single or dual knockouts), DIN; Contact GC Valves Customer Service for others.
	Standard Voltages:	24, 120, 240 AC 60 Hz; 50 Hz available 6, 12, 24 DC; Contact GC Valves Customer Service for Additional Voltages.
	Voltage Tolerance:	±10% of applicable voltage
	Coil Classes:	F, H, N
	Standard Lead Length:	24 inch
Operating Temperature	Ambient (Nominal):	32°F to 125°F
Mounting	Position:	Any
Approvals*	Agency:	UL Safety Shut-off, UL Listed, UL Recognized, CSA Approved, FM Certified

* Not available for all variations

© Registered Trademark of DuPont Co.

Dimensions/Weight

Weight (lbs.)
1.1



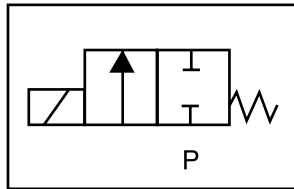
GC Valves Customer Service: 800-828-0484 (7:30am to 4pm ET) or 800-582-4232 (7:30am to 4pm PT)



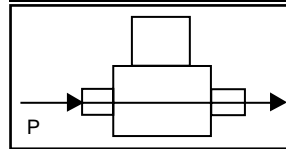
S301 – 1/4" NPT, Stainless Steel Body, Normally Closed

Valve Selection List

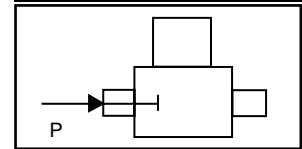
Normally Closed



Energized



De-Energized



Pipe Size NPT	Orifice Size in.	C _v	Minimum	Operating Pressure Differential (psi)								Max Fluid Temp. °F	Seal Material	Power Consumption (Watts)		Model Code (120V/60HZ — 110V/50HZ Shown)
				Maximum										AC	DC	
				Air/Gas		Water		Light Oil		Steam*						
				AC	DC	AC	DC	AC	DC	AC	DC			AC	DC	Stainless Steel Body
1/4	1/32	.03	0	2400	2400	2400	2400	—	—	150*	150*	295	EPR	10	10	S301GF02C3BC1
	3/64	.05	0	1050	1000	1050	1000	—	—	150*	150*	295	EPR	10	10	S301GF02C3BC3
	1/16	.10	0	700	300	700	300	—	—	150*	150*	295	EPR	10	10	S301GF02C3BC5
	5/64	.15	0	500	240	500	240	—	—	150*	150*	295	EPR	10	10	S301GF02C3BC7
	3/32	.21	0	400	200	400	200	—	—	150*	150*	295	EPR	10	10	S301GF02C3BC9
	7/64	.29	0	350	170	350	170	—	—	150*	150*	295	EPR	10	10	S301GF02C3BD3
	1/8	.36	0	200	140	200	140	—	—	150*	140*	295	EPR	10	10	S301GF02C3BD5
	5/32	.44	0	150	100	150	100	—	—	150*	100*	295	EPR	10	10	S301GF02C3BD7
	3/16	.65	0	100	70	100	70	—	—	100*	70*	295	EPR	10	10	S301GF02C3BE1
	1/4	.85	0	50	20	50	20	—	—	50*	20*	295	EPR	10	10	S301GF02C3BE7
9/32	1.0	0	35	15	35	15	—	—	35*	15*	295	EPR	10	10	S301GF02C3BF1	
1/4	1/32	.03	0	2400	2400	2400	2400	2400	2400	—	—	180	Nitrile	10	10	S301GF02N3BC1
	3/64	.05	0	1050	1000	1050	1000	1050	1000	—	—	180	Nitrile	10	10	S301GF02N3BC3
	1/16	.10	0	700	300	700	300	700	300	—	—	180	Nitrile	10	10	S301GF02N3BC5
	5/64	.15	0	500	240	500	240	500	240	—	—	180	Nitrile	10	10	S301GF02N3BC7
	3/32	.21	0	400	200	400	200	400	200	—	—	180	Nitrile	10	10	S301GF02N3BC9
	7/64	.29	0	350	170	350	170	350	170	—	—	180	Nitrile	10	10	S301GF02N3BD3
	1/8	.36	0	200	140	200	140	200	140	—	—	180	Nitrile	10	10	S301GF02N3BD5
	5/32	.44	0	150	100	150	100	150	100	—	—	180	Nitrile	10	10	S301GF02N3BD7
	3/16	.65	0	100	70	100	70	100	70	—	—	180	Nitrile	10	10	S301GF02N3BE1
	1/4	.85	0	50	20	50	20	50	20	—	—	180	Nitrile	10	10	S301GF02N3BE7
9/32	1.0	0	35	15	35	15	35	15	—	—	180	Nitrile	10	10	S301GF02N3BF1	
1/4	1/32	.03	0	2400	2400	2400	2400	2400	2400	—	—	230	Viton	10	10	S301GF02V3BC1
	3/64	.05	0	1050	1000	1050	1000	1050	1000	—	—	230	Viton	10	10	S301GF02V3BC3
	1/16	.10	0	700	300	700	300	700	300	—	—	230	Viton	10	10	S301GF02V3BC5
	5/64	.15	0	500	240	500	240	500	240	—	—	230	Viton	10	10	S301GF02V3BC7
	3/32	.21	0	400	200	400	200	400	200	—	—	230	Viton	10	10	S301GF02V3BC9
	7/64	.29	0	350	170	350	170	350	170	—	—	230	Viton	10	10	S301GF02V3BD3
	1/8	.36	0	200	140	200	140	200	140	—	—	230	Viton	10	10	S301GF02V3BD5
	5/32	.44	0	150	100	150	100	150	100	—	—	230	Viton	10	10	S301GF02V3BD7
	3/16	.65	0	100	70	100	70	100	70	—	—	230	Viton	10	10	S301GF02V3BE1
	1/4	.85	0	50	20	50	20	50	20	—	—	230	Viton	10	10	S301GF02V3BE7
9/32	1.0	0	35	15	35	15	35	15	—	—	230	Viton	10	10	S301GF02V3BF1	

* Class H Coil Recommended for Steam and Other High Temperature Applications

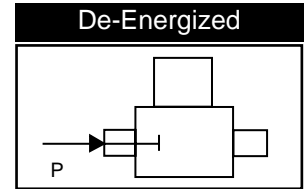
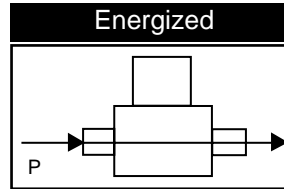
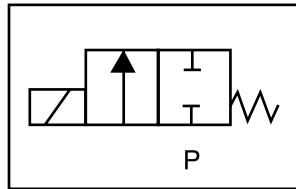
GC Valves Customer Service: 800-828-0484 (7:30am to 4pm ET) or 800-582-4232 (7:30am to 4pm PT)

S301 – 1/4" NPT, Stainless Steel Body, Normally Closed



Valve Selection List

Normally Closed



Pipe Size NPT	Orifice Size in.	C _v	Minimum	Operating Pressure Differential (psi)								Max Fluid Temp. °F	Seal Material	Power Consumption (Watts)		Model Code (120V/60HZ — 110V/50HZ Shown)
				Maximum										AC	DC	
				Air/Gas		Water		Light Oil		Steam*						
				AC	DC	AC	DC	AC	DC	AC	DC			AC	DC	Stainless Steel Body
1/4	1/32	.03	0	2400	2400	2400	2400	2400	2400	150*	150*	366	Rulon	10	10	S301GF02R3BC1
	3/64	.05	0	1050	1000	1050	1000	1050	1000	150*	150*	366	Rulon	10	10	S301GF02R3BC3
	1/16	.10	0	700	300	700	300	700	300	150*	150*	366	Rulon	10	10	S301GF02R3BC5
	5/64	.15	0	500	240	500	240	500	240	150*	150*	366	Rulon	10	10	S301GF02R3BC7
	3/32	.21	0	400	200	400	200	400	200	150*	150*	366	Rulon	10	10	S301GF02R3BC9
	7/64	.29	0	350	170	350	170	350	170	150*	150*	366	Rulon	10	10	S301GF02R3BD3
	1/8	.36	0	200	140	200	140	200	140	150*	140*	366	Rulon	10	10	S301GF02R3BD5
	5/32	.44	0	150	100	150	100	150	100	150*	100*	366	Rulon	10	10	S301GF02R3BD7
	3/16	.65	0	100	70	100	70	100	70	100*	70*	366	Rulon	10	10	S301GF02R3BE1
	1/4	.85	0	50	20	50	20	50	20	50*	20*	366	Rulon	10	10	S301GF02R3BE7
9/32	1.0	0	35	15	35	15	35	15	35*	15*	366	Rulon	10	10	S301GF02R3BF1	
1/4	1/32	.03	0	2400	2400	2400	2400	2400	2400	150*	150*	366	Teflon	10	10	S301GF02T3BC1
	3/64	.05	0	1050	1000	1050	1000	1050	1000	150*	150*	366	Teflon	10	10	S301GF02T3BC3
	1/16	.10	0	700	300	700	300	700	300	150*	150*	366	Teflon	10	10	S301GF02T3BC5
	5/64	.15	0	500	240	500	240	500	240	150*	150*	366	Teflon	10	10	S301GF02T3BC7
	3/32	.21	0	400	200	400	200	400	200	150*	150*	366	Teflon	10	10	S301GF02T3BC9
	7/64	.29	0	350	170	350	170	350	170	150*	150*	366	Teflon	10	10	S301GF02T3BD3
	1/8	.36	0	200	140	200	140	200	140	150*	140*	366	Teflon	10	10	S301GF02T3BD5
	5/32	.44	0	150	100	150	100	150	100	150*	100*	366	Teflon	10	10	S301GF02T3BD7
	3/16	.65	0	100	70	100	70	100	70	100*	70*	366	Teflon	10	10	S301GF02T3BE1
	1/4	.85	0	50	20	50	20	50	20	50*	20*	366	Teflon	10	10	S301GF02T3BE7
9/32	1.0	0	35	15	35	15	35	15	35*	15*	366	Teflon	10	10	S301GF02T3BF1	

* Class H Coil Recommended for Steam and Other High Temperature Applications



S301 – 1/4" NPT, Stainless Steel Body, Normally Closed

Part Numbering

1	2	3	4	5	6	7	8	9	10	11	12	13
S	3	0	1	G	F	0	2	C	3	B	C	1
Series			Operating Mode	Housing*	Coil Class*	Voltage*		Seal Material	Body Material	Pipe Connection	Orifice Size	
S30			1: Normally Closed	G: Conduit	F: Class F H: Class H	02: 120/60 110/50		C: EPR N: Nitrile V: Viton R: Rulon T: Teflon	3: Stainless Steel	B: 1/4" NPT	C1: 1/32" C3: 3/64" C5: 1/16" C7: 5/64" C9: 3/32" D5: 1/8" D7: 5/32" E1: 3/16" E7: 1/4" F1: 9/32"	
* See the "Engineering Guide" for additional voltages, variations and options.												

Coil Data

Coil Family	
Type	Size
All	S4

Frequency (Hz)	60	50	
Nominal Power (VA)	Inrush	46	46
	Holding	18	19

- 1/4" NPT
- Stainless Steel Body
- 2-Way Piloted Piston
- Normally Closed

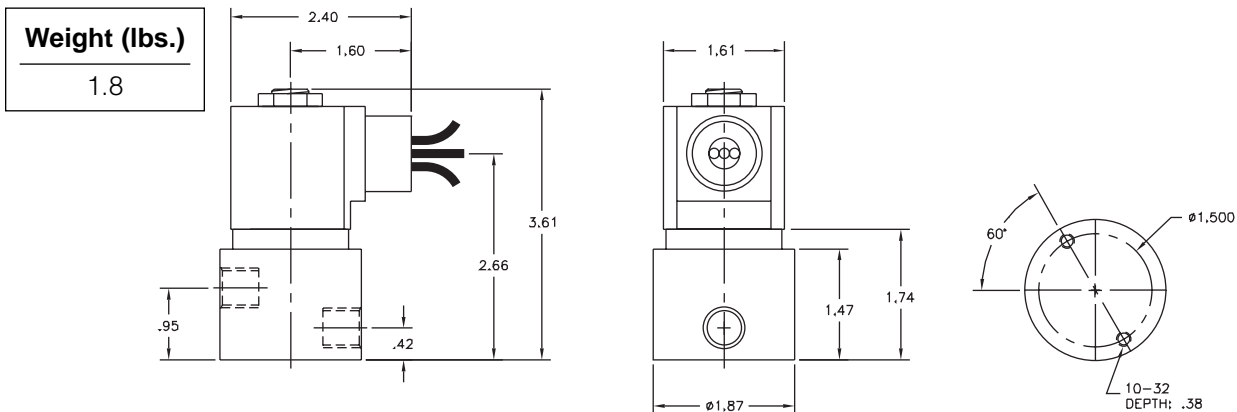


Materials	Seals:	Nitrile, Viton®, Teflon®, Ethylene Propylene
	Orifice: Pilot Main	Stainless Steel Stainless Steel Ø 3/8"
Electrical	Standard Housing:	Encapsulated Waterproof Conduit (NEMA 4/4X)
	Optional Housings:	Metallic Conduit, Explosion-proof (NEMA 7), Grommet, Open Frame, Junction Box (single or dual knockouts), DIN; Contact GC Valves Customer Service for others.
	Standard Voltages:	24, 120, 240 AC 60 Hz; 50 Hz available 6, 12, 24 DC; Contact GC Valves Customer Service for Additional Voltages.
	Voltage Tolerance:	±10% of applicable voltage
	Coil Classes:	F, H, N
	Standard Lead Length:	24 inch
Operating Temperature	Ambient (Nominal):	32°F to 125°F
Mounting	Position:	Any
Approvals*	Agency:	UL Safety Shutoff, UL Listed, UL Recognized, CSA Approved, FM Certified

* Not available for all variations

© Registered Trademark of DuPont Co.

Dimensions/Weight



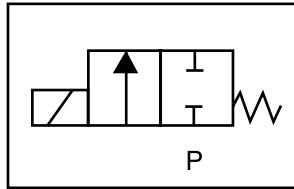
GC Valves Customer Service: 800-828-0484 (7:30am to 4pm ET) or 800-582-4232 (7:30am to 4pm PT)



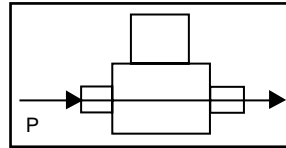
S401 – 1/4" NPT, Stainless Steel Body, Normally Closed

Valve Selection List

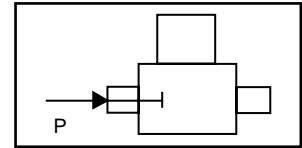
Normally Closed



Energized



De-Energized



Pipe Size NPT	Orifice Size IN	C _v	Minimum	Operating Pressure Differential (psi)								Max Fluid Temp. °F	Seal Material	Power Consumption (Watts)		Model Code (120V/60HZ — 110V/50HZ Shown)
				Maximum										AC	DC	
				Air/Gas		Water		#5 and #6 Heated Fuel Oil		Steam*						
				AC	DC	AC	DC	AC	DC	AC	DC					
1/4	3/8	1.1	0	300	150	300	150	—	—	—	—	295	EPR	10	10	S401GF02C1BF5
	3/8	1.1	0	300	150	300	150	300	150	—	—	180	Nitrile	10	10	S401GF02N1BF5
	3/8	1.1	0	300	150	300	150	300	150	—	—	230	Viton	10	10	S401GF02V1BF5
	3/8	1.1	0	300	150	300	150	300	150	—	—	366	Teflon	10	10	S401GF02T1BF5
	3/8	1.1	0	—	—	—	—	—	—	50*	50*	295	EPR**	10	10	S401GH02E1BF5
	3/8	1.1	0	—	—	—	—	—	—	150*	150*	366	Teflon**	10	9	S401GH02S1BF5

* Class H Coil Recommended for Steam and Other High Temperature Applications

Part Numbering

1	2	3	4	5	6	7	8	9	10	11	12	13
S	4	0	1	G	F	0	2	C	1	B	F	5
Series			Operating Mode	Housing*	Coil Class*	Voltage*		Seal Material	Body Material	Pipe Connection	Orifice Size	
S40			1: Normally Closed	G: Conduit	F: Class F H: Class H	02: 120/60 110/50		C: EPR N: Nitrile V: Viton T: Teflon E: EPR** S: Teflon**	1: Stainless Steel	B: 1/4" NPT	F5: 3/8"	

* See the "Engineering Guide" for additional voltages, variations and options.

**For Steam Service

Coil Data

Coil Family	
Type	Size
All	S4

Frequency (Hz)	60	50	
Nominal Power (VA)	Inrush	46	46
	Holding	20	21

GC Valves Customer Service: 800-828-0484 (7:30am to 4pm ET) or 800-582-4232 (7:30am to 4pm PT)

H40 Series



- High Pressure
- 1/4" NPT
- Stainless Steel Body
- 2-Way Piloted Piston
- Normally Closed

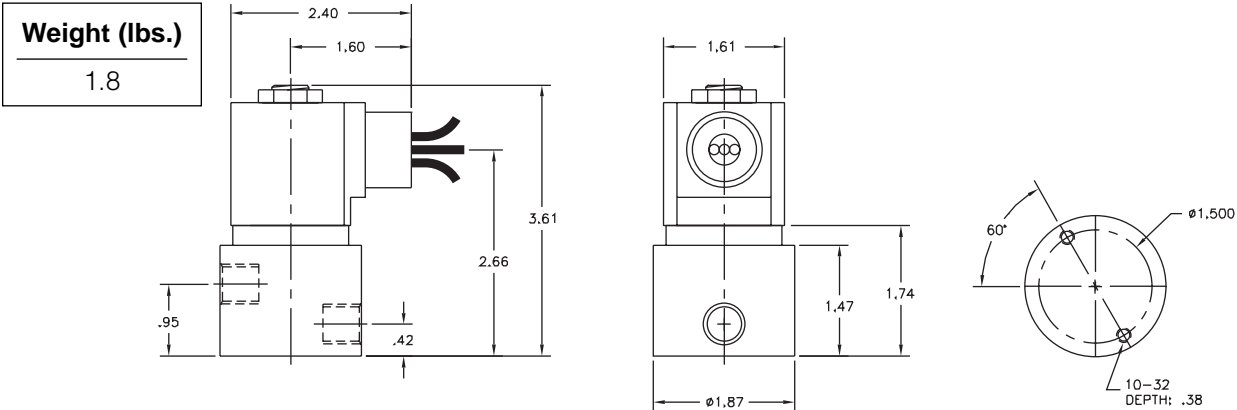


Materials	Seals:	Viton® and Teflon®
	Orifice: Pilot Main	Stainless Steel Stainless Steel Ø 3/8"
Electrical	Standard Housing:	Encapsulated Waterproof Conduit (NEMA 4/4X)
	Optional Housings:	Metallic Conduit, Explosion-proof (NEMA 7), Grommet, Open Frame, Junction Box (single or dual knockouts), DIN; Contact GC Valves Customer Service for others.
	Standard Voltages:	24, 120, 240 AC 60 Hz; 50 Hz available 6, 12, 24 DC; Contact GC Valves Customer Service for Additional Voltages.
	Voltage Tolerance:	±10% of applicable voltage
	Coil Classes:	F, H, N
	Standard Lead Length:	24 inch
Operating Temperature	Ambient (Nominal):	32°F to 125°F
Mounting	Position:	Any
Approvals*	Agency:	UL Recognized

* Not available for all variations

© Registered Trademark of DuPont Co.

Dimensions/Weight



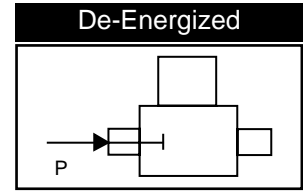
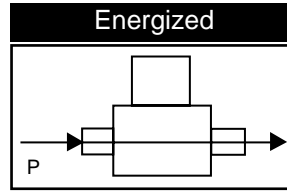
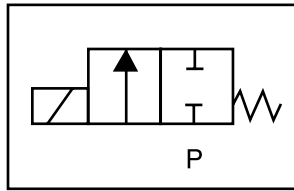
GC Valves Customer Service: 800-828-0484 (7:30am to 4pm ET) or 800-582-4232 (7:30am to 4pm PT)



H401 – High Pressure, 1/4" NPT, Stainless Steel Body, Normally Closed

Valve Selection List

Normally Closed



Pipe Size NPT	Orifice Size IN	C _v	Minimum	Operating Pressure Differential (psi)						Max Fluid Temp. °F	Seal Material	Power Consumption (Watts)		Model Code (120V/60HZ — 110V/50HZ) Shown
				Maximum			AC		DC			AC	DC	
				Air/Gas	Water	Light Oil	AC	DC	AC			DC	AC	DC
1/4	3/8	1.1	0	2200	2200	2200	2200	2200	2200	230	Viton/ Teflon	10	10	H401GF02Z1BF5

Part Numbering

1	2	3	4	5	6	7	8	9	10	11	12	13
H	4	0	1	G	F	0	2	Z	1	B	F	5
Series			Operating Mode	Housing*	Coil Class*	Voltage*		Seal Material	Body Material	Pipe Connection	Orifice Size	
H40			1: Normally Closed	G: Conduit	F: Class F	02: 120/60 110/50		Z: Viton/ Teflon	1: Stainless Steel	B: 1/4" NPT	F5: 3/8"	
* See the "Engineering Guide" for additional voltages, variations and options.												

Coil Data

Coil Family	
Type	Size
All	S4

Frequency (Hz)	60	50
Nominal Power (VA)	Inrush	46
	Holding	21

GC Valves Customer Service: 800-828-0484 (7:30am to 4pm ET) or 800-582-4232 (7:30am to 4pm PT)