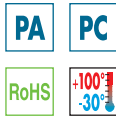




High performing
column level indicators

elesa[®]

Column level indicators with or without transparent protection



- **Assembly ends**
Glass-fibre reinforced polyamide based (PA) technopolymer, black colour.
- **Support**
Aluminium in natural colour.
- **Column level window**
Polycarbonate transparent tube.
Maximum fluid level visibility even from side positions.
- **Screws, nuts and washers**
Zinc-plated steel.
- **Packing rings**
NBR rubber O-Ring.
- **Graduated contrast screen**
Self-adhesive plastic material, resistant to oils, greases.
Fitted to the aluminium support.
- **Standard executions**
 - **HCK**: with transparent front protection (against accidental shocks), in polycarbonate (PC), extractable for cleaning operations.
 - **HCK-NP**: without transparent front protection
- **Maximum continuous working temperature**
100°C (with oil).

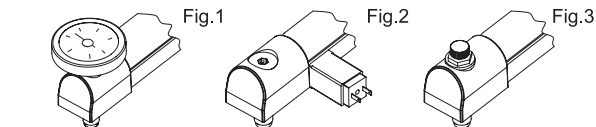
Technical data

In laboratory tests carried out with mineral oil type CB68 (according to ISO 3498) at 23°C for a limited period of time, the values of pressure resistance were very high.

If you need to use the indicator with other oils or fluids and under different pressure and temperature conditions, please contact ELESA Technical Department. In any case we suggest to verify the suitability of the product under the actual working conditions.

Special executions on request

- Column level window in transparent methylmethacrylate (PMMA) for max 70°C use.
- AISI 303 stainless steel screws with hexagon socket.
- Polyamide based technopolymer float (from HCK.127) red colour.
- Expanded NBR float (from HCK.176) black colour with AISI 316 stainless steel spiral for special executions, viscous liquids, high temperatures.
- Column level window with visibility (l2) superior to 452 mm and holes centre distance for fixing up to 1.500 mm.
- Electric sensor bracket pre-set at the following temperatures: 50°C, 60°C, 70°C, 80°C.
- Packing rings in special material depending on the customer's needs.
- Built-in thermometer with red indication line.
- External scale thermometer (Fig. 1) with internal probe for fluid temperature.
- Electric level sensor (Fig.2, from HCK.254) which can be fitted along the axis of the indicator according to the actual needs. With right (DX) or left (SX) connectors, normally closed (NC), normally open (NO).
- Special screw with nickel-plated brass tap (Fig. 3) to be fitted to the lower assembly end for any maintenance operation requiring the indicator exclusion.

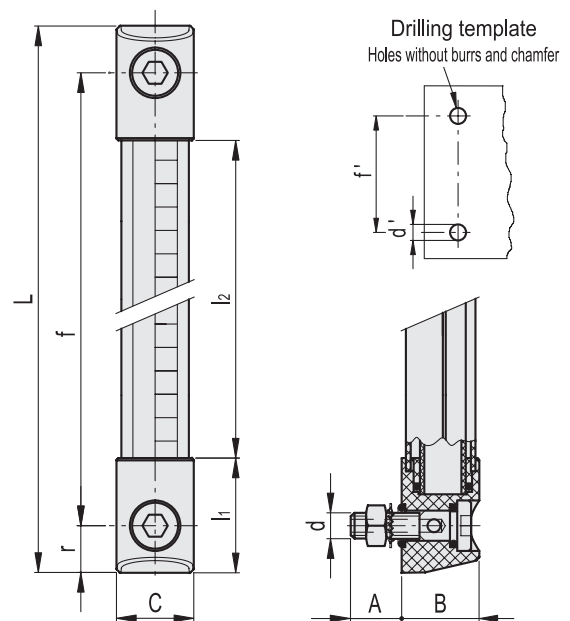
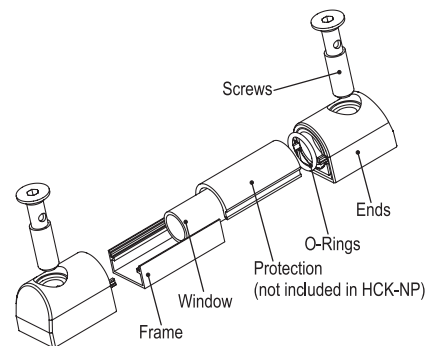


HCK

HCK-NP

| Elesa Standards | | | | Main dimensions | | | | | | | | | Mounting holes | | C # | Δ△ |
|-----------------|-------------|-----------|----------------|-----------------|-----|----|----|----|-----|------|-----|------|----------------|----------|------|-----|
| Code | Description | Code | Description | f | d | A | B | C | L | l1 | l2 | r | d' ±0.2 | f' ±0.2 | [Nm] | g |
| 111001 | HCK.76-M10 | 111001-NP | HCK.76-M10-NP | 76 | M10 | 20 | 33 | 33 | 113 | 35.5 | 42 | 18.5 | 10.5 | 76 ±0.2 | 12 | 183 |
| 111011 | HCK.127-M12 | 111011-NP | HCK.127-M12-NP | 127 | M12 | 20 | 33 | 33 | 164 | 46.5 | 71 | 18.5 | 12.5 | 127 ±0.5 | 12 | 220 |
| 111021 | HCK.176-M12 | 111021-NP | HCK.176-M12-NP | 176 | M12 | 20 | 33 | 33 | 213 | 46.5 | 120 | 18.5 | 12.5 | 176 ±0.5 | 12 | 250 |
| 111031 | HCK.254-M12 | 111031-NP | HCK.254-M12-NP | 254 | M12 | 20 | 33 | 33 | 291 | 46.5 | 198 | 18.5 | 12.5 | 254 ±0.5 | 12 | 298 |
| 111041 | HCK.381-M12 | 111041-NP | HCK.381-M12-NP | 381 | M12 | 20 | 33 | 33 | 418 | 46.5 | 325 | 18.5 | 12.5 | 381 ±0.5 | 12 | 377 |
| 111051 | HCK.508-M12 | 111051-NP | HCK.508-M12-NP | 508 | M12 | 20 | 33 | 33 | 545 | 46.5 | 452 | 18.5 | 12.5 | 508 ±0.5 | 12 | 455 |

Maximum tightening torque.

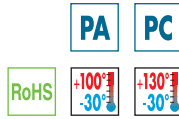


HCK-GL

INOX
Stainless Steel

ELESA Original design

Column level indicators with transparent protection for glycol-based solutions



- **Assembly ends**
Glass-fibre reinforced polyamide based (PA) technopolymer, black colour.
- **Support**
Aluminium in natural colour.
- **Column level window**
Transparent tube in Pyrex glass, also suitable for use with glycol-based solutions.
Maximum fluid level visibility even from side positions.
- **Transparent front protection** (against accidental shocks)
Polycarbonate (PC), extractable for cleaning operations
- **Screws, nuts and washers**
 - **HCK-GL**: zinc-plated steel screws with hexagon socket, nuts and washers.
 - **HCK-GL-SST**: AISI 303 stainless steel screws with hexagon socket, AISI 304 stainless steel nuts and washers.
- **Packing rings**
 - **HCK-GL**: NBR rubber O-Ring
 - **HCK-GL-SST**: FKM type VITON®* synthetic rubber O-Ring.
- **Graduated contrast screen**
Self-adhesive plastic material, resistant to oils, greases.
Fitted to the aluminium support.
- **Maximum continuous working temperature**
 - **HCK-GL**: 100°C (with oil, water, glycol-based solutions).
 - **HCK-GL-SST**: 130°C (with oil, water, glycol-based solutions).

In laboratory tests these indicators showed an excellent resistance to temperatures up to 150/160°C for many hours with pressures of 5/6 bar.

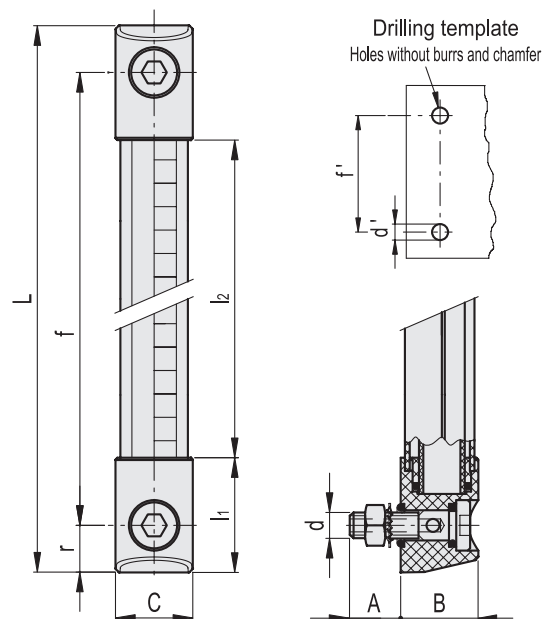
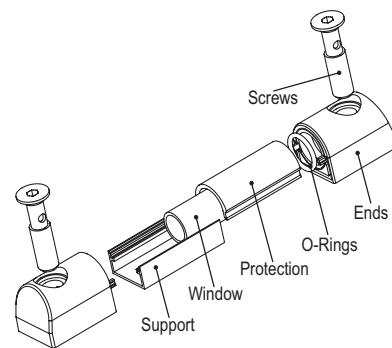
Technical data

In laboratory tests carried out with mineral oil type CB68 (according to ISO 3498) water or water/glycol-based solutions (50%), at 23°C for a relatively limited time, the values of pressure resistance were very high even higher than 30 bar. If you need to use the indicator with other oils or fluids and under different pressure and temperature conditions, please contact ELESA Technical Department. In any case we suggest to verify the suitability of the product under the actual working conditions.

Special executions on request

- Polyamide based technopolymer float (from HCK.127) red colour.
- Expanded NBR float (from HCK.176) black colour with AISI 316 stainless steel spiral for special executions, viscous liquids, high temperatures.
- Column level window with visibility (l2) superior to 452 mm and holes centre distance (f) for fixing up to 1.500 mm.
- Electric sensor bracket pre-set at the following temperatures: 50°C, 60°C, 70°C, 80°C.
- Packing rings in special material depending on the customer's needs.
- Built-in thermometer with red indication line.
- External scale thermometer (Fig. 1) with internal probe for fluid temperature.
- Electric level sensor (Fig. 2, from HCK.254) which can be fitted along the axis of the indicator according to the actual needs. With right (DX) or left (SX) connectors, normally closed (NC), normally open (NO).
- Special screw with nickel-plated brass tap (Fig. 3) to be fitted to the lower assembly end for any maintenance operation requiring the indicator exclusion.

* Registered trademark by DuPont Dow Elastomers.



HCK-GL

HCK-GL-SST

INOX
Stainless Steel

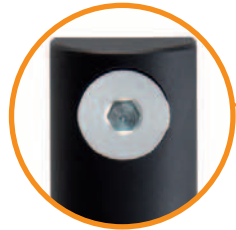
| Elesa Standards | | Main dimensions | | | | | | | | | | Mounting holes | | C # | Δ | Elesa Standards | |
|-----------------|----------------|-----------------|-----|----|----|----|-----|------|-----|------|--------|----------------|------|-----|--------|--------------------|--|
| Code | Description | f | d | A | B | C | L | l1 | l2 | r | d'±0.2 | f'±0.2 | [Nm] | g | Code | Description | |
| 111004 | HCK.76-GL-M10 | 76 | M10 | 20 | 33 | 33 | 113 | 35.5 | 42 | 18.5 | 10.5 | 76 | 12 | 183 | 111005 | HCK.76-GL-SST-M10 | |
| 111014 | HCK.127-GL-M12 | 127 | M12 | 20 | 33 | 33 | 164 | 46.5 | 71 | 18.5 | 12.5 | 127 | 12 | 220 | 111015 | HCK.127-GL-SST-M12 | |
| 111024 | HCK.176-GL-M12 | 176 | M12 | 20 | 33 | 33 | 213 | 46.5 | 120 | 18.5 | 12.5 | 176 | 12 | 250 | 111025 | HCK.176-GL-SST-M12 | |
| 111034 | HCK.254-GL-M12 | 254 | M12 | 20 | 33 | 33 | 291 | 46.5 | 198 | 18.5 | 12.5 | 254 | 12 | 298 | 111035 | HCK.254-GL-SST-M12 | |
| 111044 | HCK.381-GL-M12 | 381 | M12 | 20 | 33 | 33 | 418 | 46.5 | 325 | 18.5 | 12.5 | 381 | 12 | 377 | 111045 | HCK.381-GL-SST-M12 | |
| 111054 | HCK.508-GL-M12 | 508 | M12 | 20 | 33 | 33 | 545 | 46.5 | 452 | 18.5 | 12.5 | 508 | 12 | 455 | 111055 | HCK.508-GL-SST-M12 | |

Maximum tightening torque.

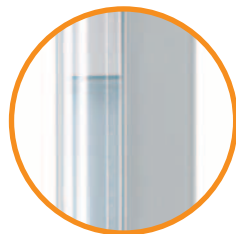
ELESA models all rights reserved in accordance with the law. Always mention the source when reproducing our drawings.

elesa

High performing column level indicators



Set screw and oil circulation.



Tube in Pyrex (ESG safety glass) resistant to glycol-based solutions.

Maximum continuous working temperature 130 °C with peaks at 160 °C and pressure of 5/6 bar.



Contrast screen with level indications.



Zinc-plated or stainless steel screws and nuts.

FKM type VITON®* synthetic rubber or NBR rubber O-Ring.
*Registered trademark by DuPont Dow Elastomers.

Technopolymer assembly ends.

Polycarbonate protection (against accidental shocks).

Aluminium support with side visibility.

Hole centre distance for fixing up to 1500 mm.