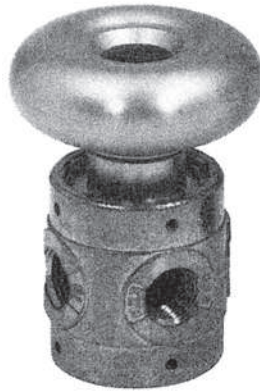
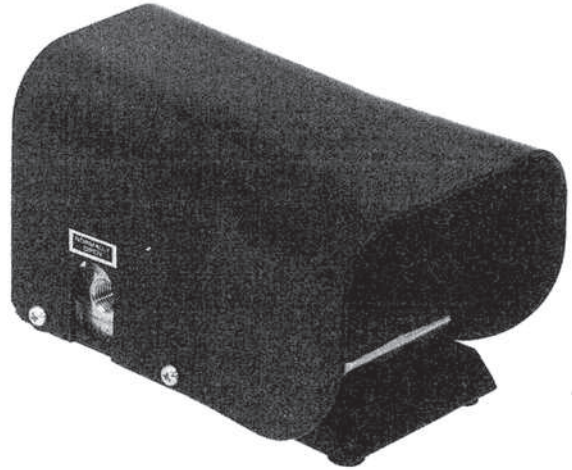


125HO 125HO-3-10-21
 Model 125HO is a 0.125-inch orifice, detented push-button valve with knurled steel actuator and bayonet-type lock. Detent is achieved by pushing actuator and rotating 30°. The 125HO can be used as a spring-return valve without detent.



250HO 250HO-3-10-20
 Model 250HO is a 0.250-inch orifice, normally closed, detented, palm-operated valve. Detent is achieved by pressing the large aluminum palm actuator; valve is returned to the normally closed position by pressing the red center-button. The 250HO functions as a pneumatic "circuit breaker" and automatically closes if there is a sudden loss of pressure (below approximately 12 psig); valve must be manually re-opened. The pressure range of the 250HO valve is 25-125 psig.

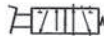


250F 250F
 Model 250F is a 2-way or 3-way, 0.250-inch orifice, guarded foot valve. Its 12-gauge steel guard helps protect the operator's foot from falling objects and other hazards. The actuator has a positive

stop to protect valve from damage in rugged use. Its four rubber feet may be removed and the holes used for mounting.



250-4F
 Model 250-4F is a 4 way, 5 port version of 250F, supplied normally closed/normally open as standard.



Options for Humphrey Manual and Foot Valves

- Mounting Base, Code 21.
- Panel Mounting Nuts, Code 22 (125 Series valves only).
- Brass Body, (3-way models only).
- Fluoroelastomer diaphragms for resistance to mild chemicals and for sustained temperatures to 400°F (204.4°C) and intermittent temperatures to 600°F (315.5°C). Not available for 125PLG or 250F valves.
- Steel Button for Push-Button Valves, Code 41.
- Bottom inlet for normally closed models (except 250F/-4F).

Specifications

MEDIA:
 Compressed Air (Consult factory for others)

PRESSURE RANGE:
125PLG: 30 to 125 psig (2.1 to 8.6 bars)
125P, 125HO: 0 to 125 psig (0 to 8.6 bars)
250PL, 250P, 250F: 0 to 125 psig (0 to 8.6 bars)
250HO: 25 to 125 psig (1.7 to 8.6 bars)

TEMPERATURE RANGE:
 -20 to 225°F (-28.9 to 107.2°C)

MATERIALS:
All 125s: Zinc Die Cast, Zinc Plated Steel, Aluminum, Brass, Stainless Steel, Buna N, Nylon
All 250s: Zinc Die Cast, Zinc Plated Steel, Aluminum, Brass, Stainless Steel, Buna N
LUBRICATION Not required
FILTRATION Not required

Air Flow to Atmosphere

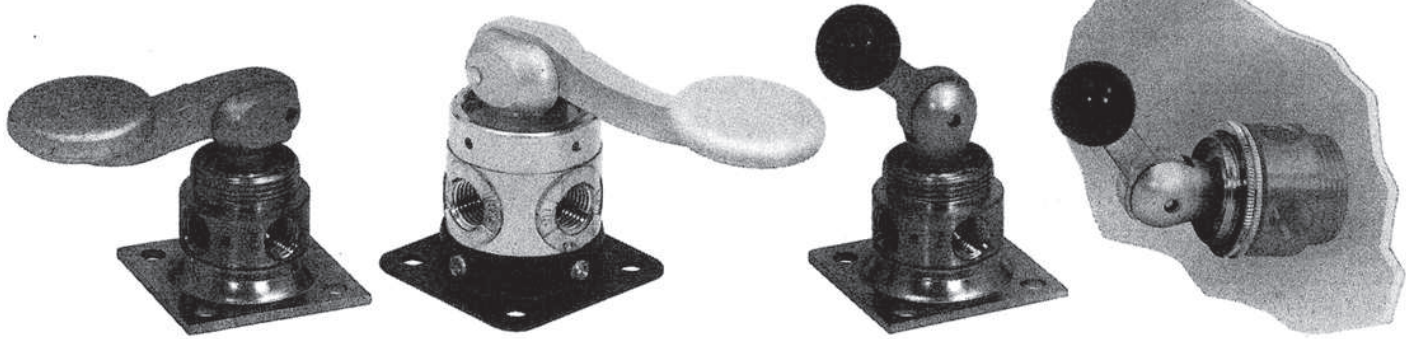
MODEL	25 PSIG (1.7 BARS)		125 PSIG (8.6 BARS)		Weight	
	CFM	LPM	CFM	LPM	ACTUAL LBS	KGS
125PLG	4.5	127.3	24.3	679.2	.26	.12
125P					.21	.09
125HO					.26	.12
250PL	25.0	707.5	75.0	2122.5	0.7	0.3
250P					0.6	0.3
250HO					1.0	0.4
250F					3.8	1.7
250-4F	22.0	622.6	70.0	1981.0	4.7	2.2

Fill/Exhaust Times (Seconds)

MODEL	SUPPLY PRESSURE							
	At 50 psig (3.5 bars)				At 100 psig (7.0 bars)			
	Chamber Fill 0-40 psig (0-2.8 bars)		Exhaust 50-10 psig (3.5-7 bars)		Chamber Fill 0-80 psig (0-5.5 bars)		Exhaust 100-20 psig (7.0-1.4 bars)	
	10 Cubic Inches (164cc)	100 Cubic Inches (1640cc)	10 Cubic Inches (164cc)	100 Cubic Inches (1640cc)	FILL	EXHAUST	FILL	EXHAUST
All 125s	0.106	0.238	0.834	1.150	0.124	0.221	0.922	1.260
All 250s	0.032	0.044	0.312	0.433	0.033	0.059	0.324	0.565

Humphrey Manual Valves

Humphrey manual valves are 2-way, 3-way, and 4-way valves featuring high flow and full orifice throughout their internal chambers. Simply designed for high reliability in rugged use, these compact valves require no lubrication. Bottom inlets are available for normally closed valves (except 250-4H and 501V valves). A 125 Series valve has a full 0.125-inch orifice. A 250 Series valve has a full 0.250-inch orifice, providing three times the flow of 125 Series valves.



125T 125T-3-10-21
Model 125T is a 0.125-inch orifice, heavy-duty lever valve that is easy to operate with fingers or thumb. Designed for reduced operator fatigue, the 125T is also excellent as a knee-operated valve. The actuator can be positioned (rotated) 360°, and the valve itself can be mounted in any position.



125T

250T 250T-3-10-21
Model 250T is a 0.250-inch orifice, heavy-duty lever valve that is easy to operate with fingers or thumb. Designed for reduced operator fatigue. The actuator can be positioned (rotated) 360°, and the valve itself can be mounted in any position.



250T

125V 125V-3-10-21
Model 125V is a 0.125-inch orifice, 2-position, normally closed, heavy duty valve with a straight-line 90° throw and positive detent in closed or open position. The large, rugged toggle will not wobble and permits visual identification of valve position. The actuator can be positioned (rotated) 360°.

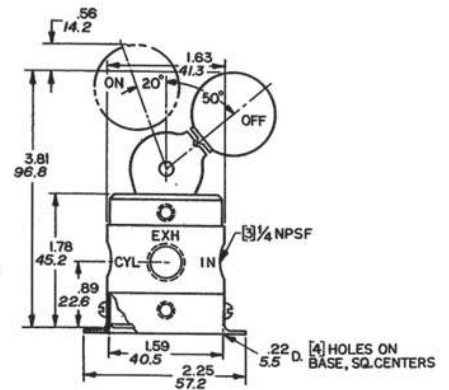
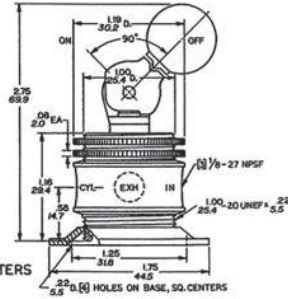
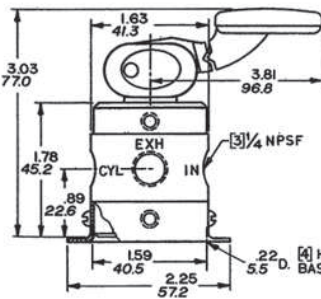
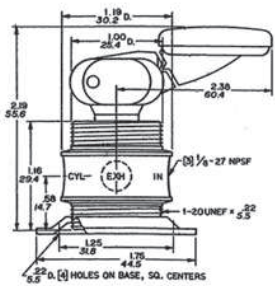


125V

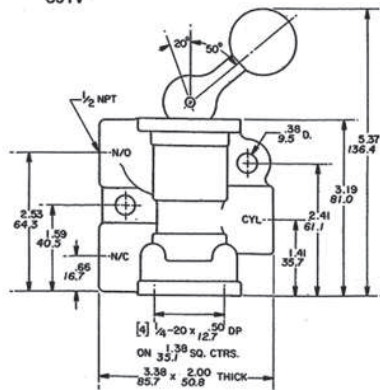
125V for panel mounting 125V-3-10-22
Model 125V valve for panel mounting is identical to the 125V valve but may be ordered with Panel Mounting Nuts (Specify Code 22).



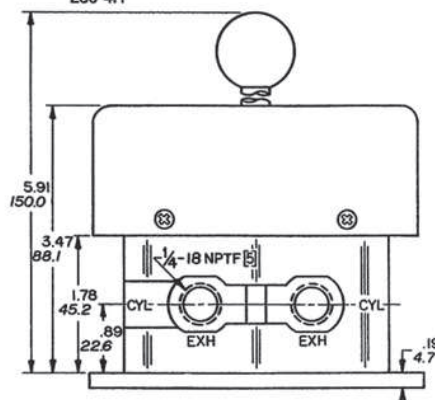
250V

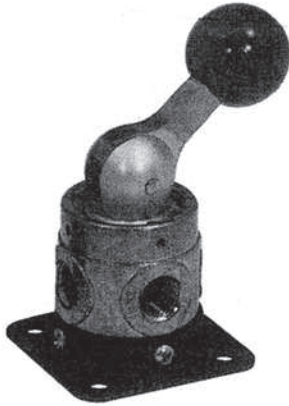


501V

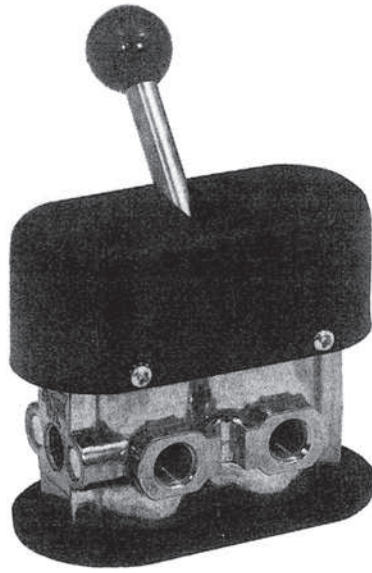


250-4H



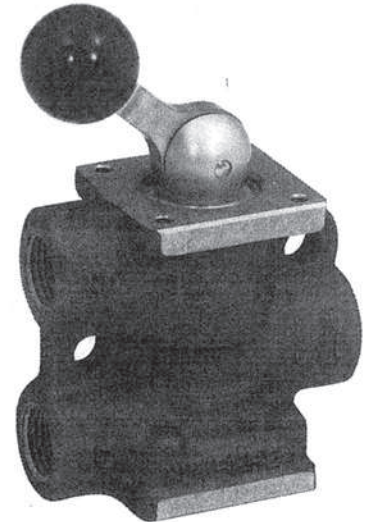


250V 250V-3-10-21
 Model 250V is a 0.250-inch orifice, detented, heavy-duty toggle valve providing positive detent in the closed or open position and a straight-line 70° throw. The actuator can be positioned (rotated) 360°. The base of the 250V may be used for either panel or bottom mounting.



250-4H 250-4H-21
 Model 250-4H is a 0.250-inch orifice, lever-operated valve. Moving the lever toward the inlet actuates right side; moving the lever toward the exhaust actuates left side; the center position is neutral. Mount

with four #10-32 tapped holes in body, with two slotted lugs on body, or on mounting base. The valve may be positioned on base in 90° increments.



501V 501V-3-12-20
 Model 501V is a rugged, high flow (275 scfm at 125 psig), multi-purpose toggle valve offering several functions: normally closed, normally open, bi-media, and directional. All ports are on the same vertical plane for straight-line plumbing. The 501V valve can be mounted in any position: in-line, side mounted with bolts, with tapped holes in body, or on base. Full 0.500-inch orifice. See 501A piloted valve for dimensions and flow specifications.



Options for Humphrey Manual Valves

- Mounting Base, Code 21.
- Panel Mounting Nuts, Code 22 (125 Series valves only).
- Brass Body (For 125 and 250 Series 3-way valves.)
- Fluoroelastomer diaphragms for resistance to mild chemicals and for sustained temperatures to 400°F (204.4°C) and intermittent temperatures to 600°F (315.5°C).
- Bottom inlet for normally closed models (except 250-4H and 501V).

Specifications

MEDIA:
 Compressed Air (Consult factory for others)

PRESSURE RANGE:
 All 125s: 0 to 125 psig (0 to 8.6 bars)
 All 250s: 0 to 125 psig (0 to 8.6 bars)

TEMPERATURE RANGE:
 -20 to 225°F (-28.9 to 107.2°C)

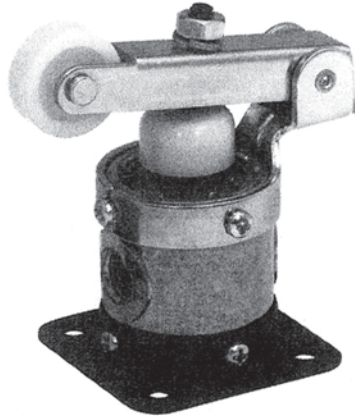
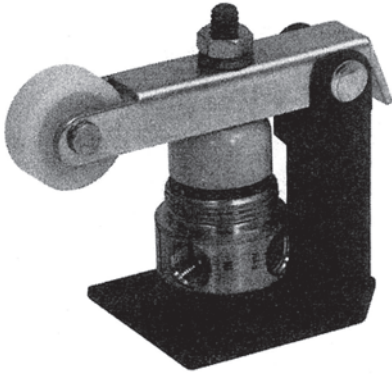
MATERIALS:
 All 125s: Zinc Die Cast, Zinc Plated Steel, Aluminum, Brass, Stainless Steel, Buna N, Nylon
 All 250s: Zinc Die Cast, Zinc Plated Steel, Aluminum, Brass, Stainless Steel, Buna N
 LUBRICATION Not required
 FILTRATION Not required

Air Flow to Atmosphere

MODEL	25 PSIG (1.7 BARS)		125 PSIG (8.6 BARS)		Weight	
	CFM	LPM	CFM	LPM	ACTUAL LBS	KGS
125T	4.5	127.3	24.3	679.2	.26	.12
125V					.24	.11
250T	25.0	707.5	75.0	2122.5	.70	.30
250V					.70	.30
250-4H	22.0	622.6	70.0	1981.0	2.1	.94

Fill/Exhaust Times (Seconds)

MODEL	SUPPLY PRESSURE							
	At 50 psig (3.5 bars)				At 100 psig (7.0 bars)			
	Chamber Fill 0-40 psig (0-2.8 bars)		Exhaust 50-10 psig (3.5-.7 bars)		Chamber Fill 0-80 psig (0-5.5 bars)		Exhaust 100-20 psig (7.0-1.4 bars)	
	10 Cubic Inches (164cc)	100 Cubic Inches (1640cc)	10 Cubic Inches (164cc)	100 Cubic Inches (1640cc)	10 Cubic Inches (164cc)	100 Cubic Inches (1640cc)	10 Cubic Inches (164cc)	100 Cubic Inches (1640cc)
	FILL	EXHAUST	FILL	EXHAUST	FILL	EXHAUST	FILL	EXHAUST
All 125s	0.106	0.238	0.834	1.150	0.124	0.221	0.922	1.260
All 250s	0.032	0.044	0.312	0.433	0.033	0.059	0.324	0.565



125C 125C-3-10-40
 Model 125C is an economical 0.125-inch orifice roller cam valve. The roller (1" DIA x 3/8") and actuator button are fabricated of self-lubricating, non-sparking, high-impact nylon. Roller height is adjusted with screw and locknut. Furnished with mounting base. Do not exceed allowable stroke or strike adjusting-screw with cam.



250C
 Model 250C is an economical 0.250-inch orifice roller cam valve. The roller (1" DIA x 3/8") and actuator button are fabricated of self-lubricating, non-sparking, high-impact nylon. Roller height is adjusted with screw and locknut.

250C-3-10-21
 Both the actuator and the valve may be rotated on base in 90° increments. Do not exceed allowable stroke or strike adjusting-screw with cam.



Options for Humphrey Mechanical Valves

- Mounting Base, Code 21.
- Brass Body
- Fluoroelastomer diaphragms for resistance to mild chemicals and for sustained temperatures to 400°F (204.4°C) and intermittent temperatures to 600°F (315.5°C).
- Panel Mounting Nuts, Code 22. For 125B and 125MP only.
- Bottom inlet for normally closed models.

Specifications

MEDIA:
 Compressed Air (Consult factory for others)

PRESSURE RANGE:
All 125s: 0 to 125 psig (0 to 8.6 bars)
All 250s: 0 to 125 psig (0 to 8.6 bars)

TEMPERATURE RANGE:
 -20 to 225°F (-28.9 to 107.2°C)

MATERIALS:
All 125s: Zinc Die Cast, Zinc Plated Steel, Aluminum, Brass, Stainless Steel, Buna N, Nylon
All 250s: Zinc Die Cast, Zinc Plated Steel, Aluminum, Brass, Stainless Steel, Buna N

LUBRICATION Not required
FILTRATION Not required

Air Flow to Atmosphere

MODEL	25 PSIG (1.7 BARS)		125 PSIG (8.6 BARS)		Weight	
	CFM	LPM	CFM	LPM	ACTUAL LBS	KGS
125B	4.5	127.3	24.3	679.2	.21	.09
125MP					.28	.13
125MC					.41	.19
125MOC					.43	.20
125C					.43	.20
250C	25.0	707.5	75.0	2122.5	.80	.40

Fill/Exhaust Times (Seconds)

-MODEL	SUPPLY PRESSURE							
	At 50 psig (3.5 bars)				At 100 psig (7.0 bars)			
	Chamber Fill 0-40 psig (0-2.8 bars)		Exhaust 50-10 psig (3.5-.7 bars)		Chamber Fill 0-80 psig (0-5.5 bars)		Exhaust 100-20 psig (7.0-1.4 bars)	
	FILL	EXHAUST	FILL	EXHAUST	FILL	EXHAUST	FILL	EXHAUST
All 125s	0.106	0.238	0.834	1.150	0.124	0.221	0.922	1.260
All 250s	0.032	0.044	0.312	0.433	0.033	0.059	0.324	0.565

125/250/501 SERIES

1/8-, 1/4-, and 1/2-inch ports 2-way, 3-way, & 4-way

VALVES

	2 WAY	3 WAY	NORM. CLOSED	NORM. OPEN	W/OUT MOUNT. BASE	WITH MOUNT. BASE**	PANEL MOUNT. NUTS**	NYLON BUTTON	STEEL BUTTON	FKM*** Seals	BRASS BODY	BOTTOM INLET (N/C only)
OPTION CODE	2	3	10	11	20	21	22	40	41	VAI	BRB	BIN
MODEL 125B	Specify	N/C	N/C	N/C	N/C	Specify	Specify	NA	NA	Specify	Specify	Specify
125C	Specify	N/C	N/C	N/C	NA	STD	NA	STD	NA	Specify	Specify	Specify
125HO	Specify	N/C	N/C	NA	N/C	Specify	Specify	NA	STD	Specify	Specify	Specify
125MC	Specify	N/C	N/C	N/C	N/C	Specify	NA	NA	STD	Specify	Specify	Specify
125MOC	Specify	N/C	N/C	N/C	N/C	Specify	NA	NA	STD	Specify	Specify	Specify
125MP	Specify	N/C	N/C	N/C	N/C	Specify	Specify	NA	STD	Specify	Specify	Specify
125P	Specify	N/C	N/C	N/C	N/C	Specify	Specify	STD	Specify	Specify	Specify	Specify
125PLG	NA	STD	STD	NA	NA	STD	STD	NA	NA	NA	Specify	Specify
125T	Specify	N/C	N/C	N/C	N/C	Specify	NA	NA	NA	Specify	Specify	Specify
125V	Specify	N/C	N/C	NA	N/C	Specify	Specify	NA	NA	Specify	Specify	Specify
250C	Specify	N/C	N/C	N/C	N/C	Specify	NA	STD	NA	Specify	Specify	Specify
250F*	Specify	N/C	N/C	N/C	NA	STD	NA	STD	NA	Specify	Specify	NA
250HO	NA	N/C	N/C	NA	N/C	Specify	NA	NA	NA	Specify	Specify	Specify
250P	Specify	N/C	N/C	N/C	N/C	Specify	NA	STD	NA	Specify	Specify	Specify
250PL	Specify	N/C	N/C	N/C	N/C	Specify	NA	NA	NA	Specify	Specify	Specify
250T	Specify	N/C	N/C	N/C	N/C	Specify	NA	NA	NA	Specify	Specify	Specify
250V	Specify	N/C	N/C	NA	N/C	Specify	NA	NA	NA	Specify	Specify	Specify
250-4F*	NA	NA	NA	NA	NA	STD	NA	STD	NA	Specify	NA	NA
250-4H	NA	NA	NA	NA	STD	Specify	NA	STD	NA	Specify	NA	NA
501V	Specify	N/C	NA	NA	N/C	Specify	NA	NA	NA	Specify	NA	NA

*Model 250F and -4F may be ordered without guard.

**Mounting accessories can be ordered separately. Contact your distributor.

***Fluoroelastomer

HOW TO ORDER

Starting with Model Number specify options in order from left to right.

Example: To order Model 250P:

3-Way Operation (250P-3);
 Normally Open (250P-3-11);
 Mounting Base (250P-3-11-21);
 With Viton Seals (250P-3-11-21 w/VAI); this is the complete Model Number.

Remember: Option Codes marked STD, NA are not used as part of the Model Number when ordering. N/C indicates no charge but Option Code must be included in the Model Number.

N/C = No charge

STD = Standard

NA = Not available

Specify = Additional charge for this option